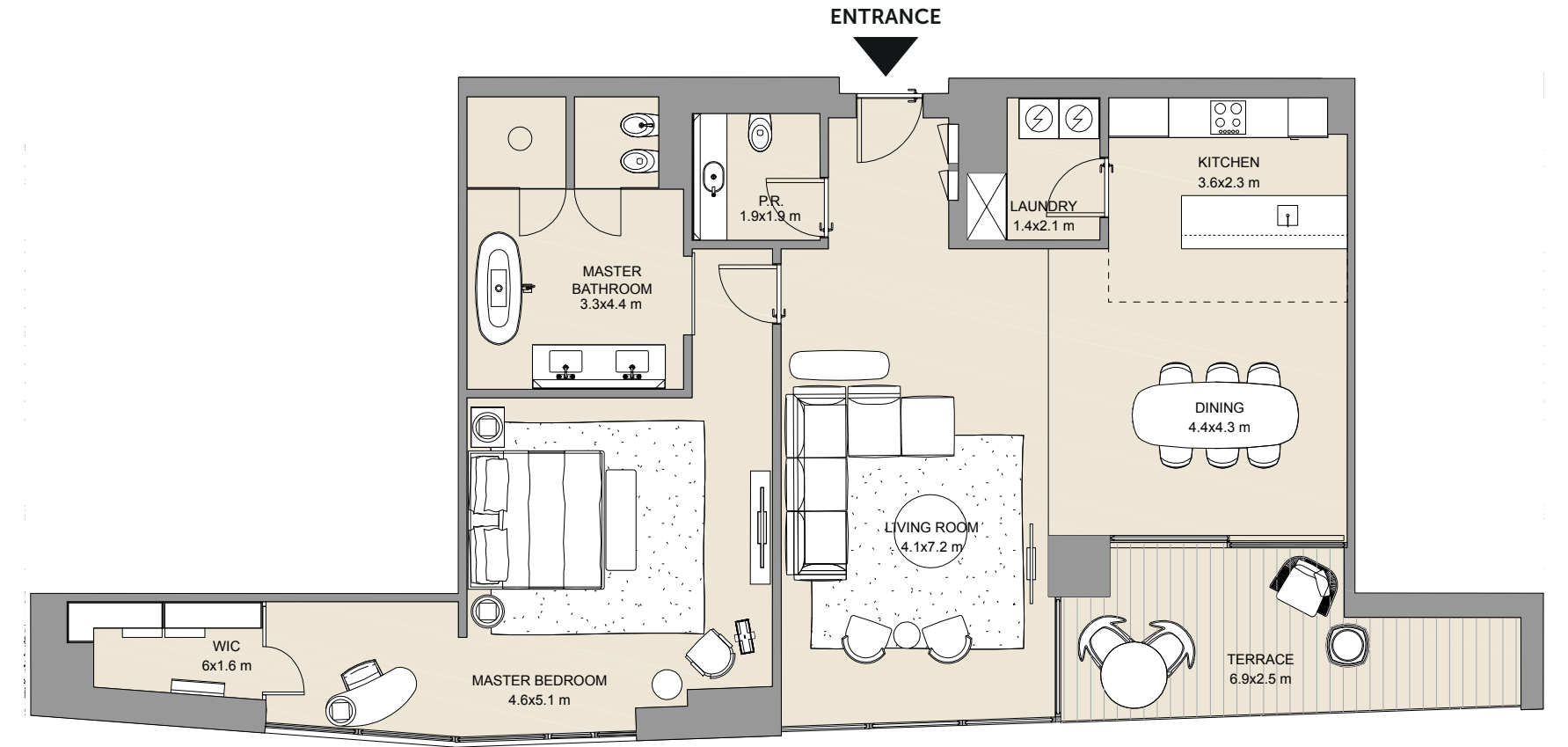
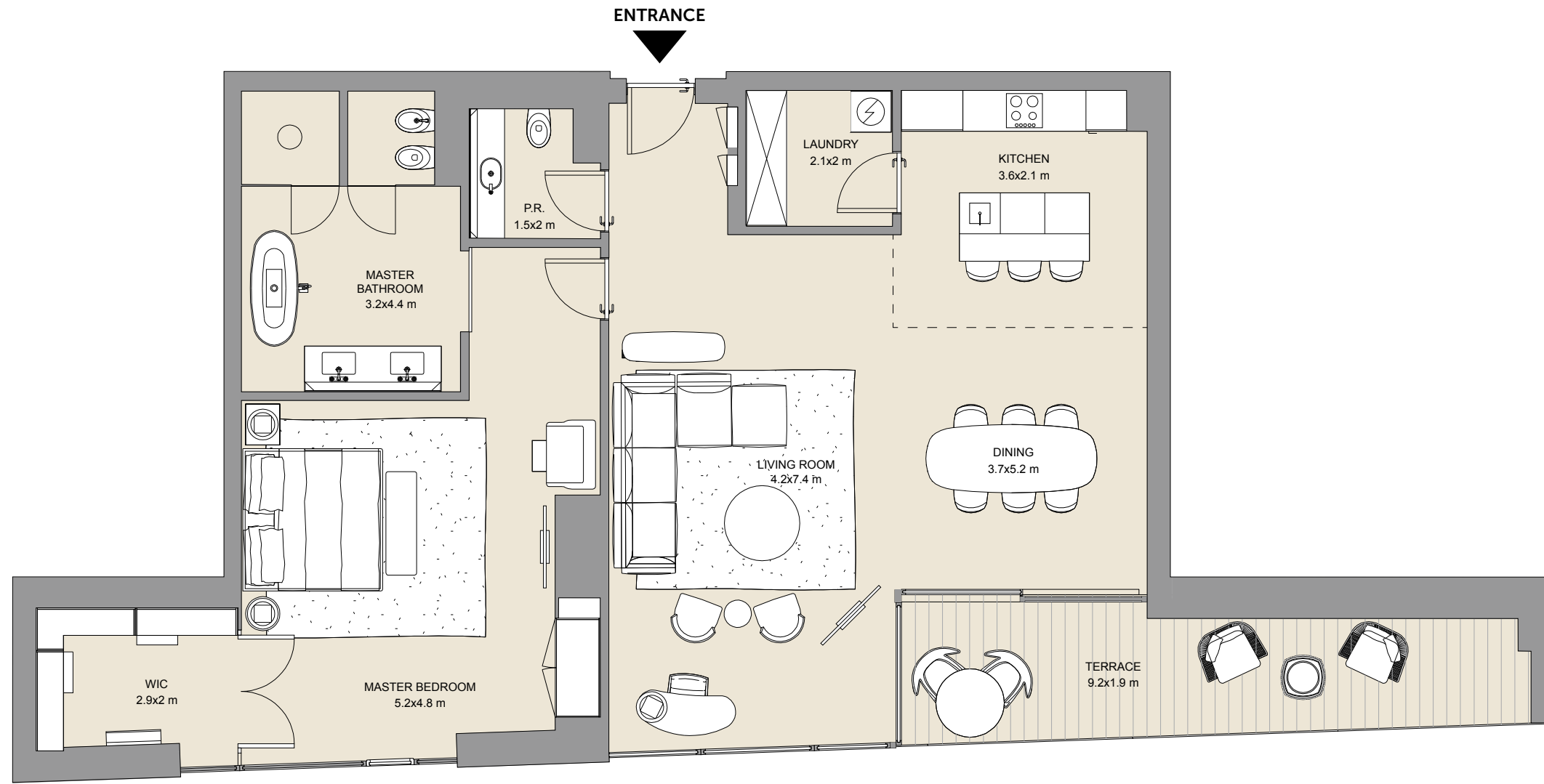
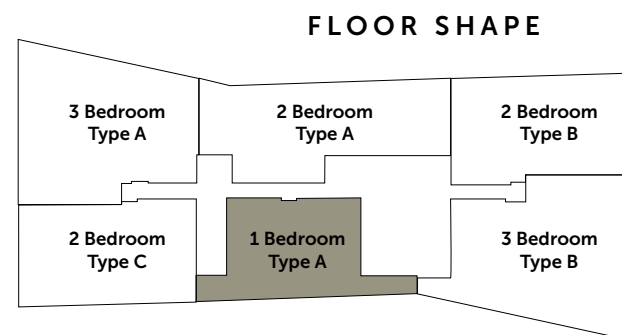


FLOOR PLANS

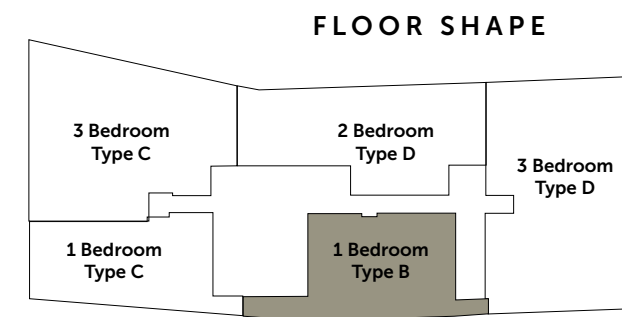
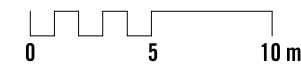


FLOOR SHAPE



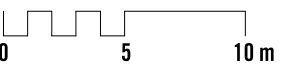
UNITS	NET AREA	BALCONY	TOTAL
15	1,435 sq. ft.	172 sq. ft.	1,607 sq. ft.

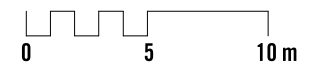
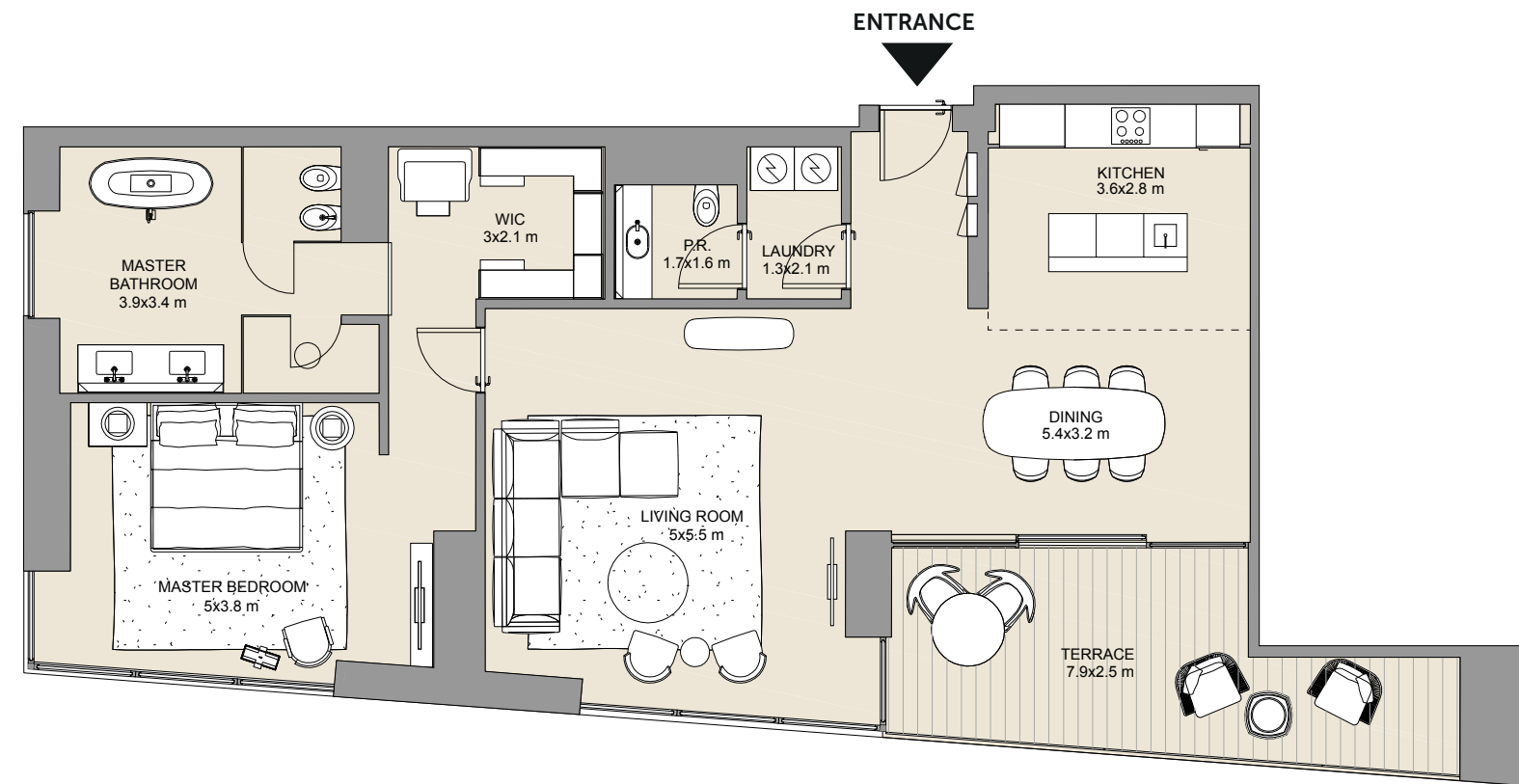
**TYPE A - VIEW**  
BLOCK 2 - SEA + CITY VIEW  
BLOCK 4 & 6 - SEA VIEW



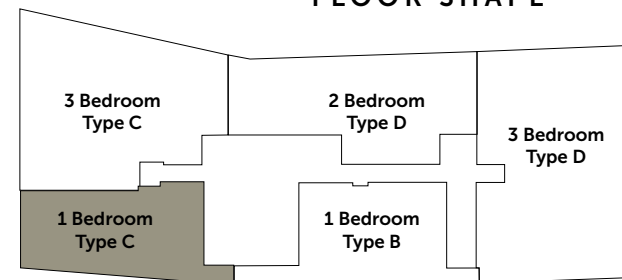
UNITS	NET AREA	BALCONY	TOTAL
15	1,393 sq. ft.	158 sq. ft.	1,551 sq. ft.

**TYPE B - VIEW**  
BLOCK 1 & 3 - SEA + CITY VIEW  
BLOCK 5 - SEA VIEW



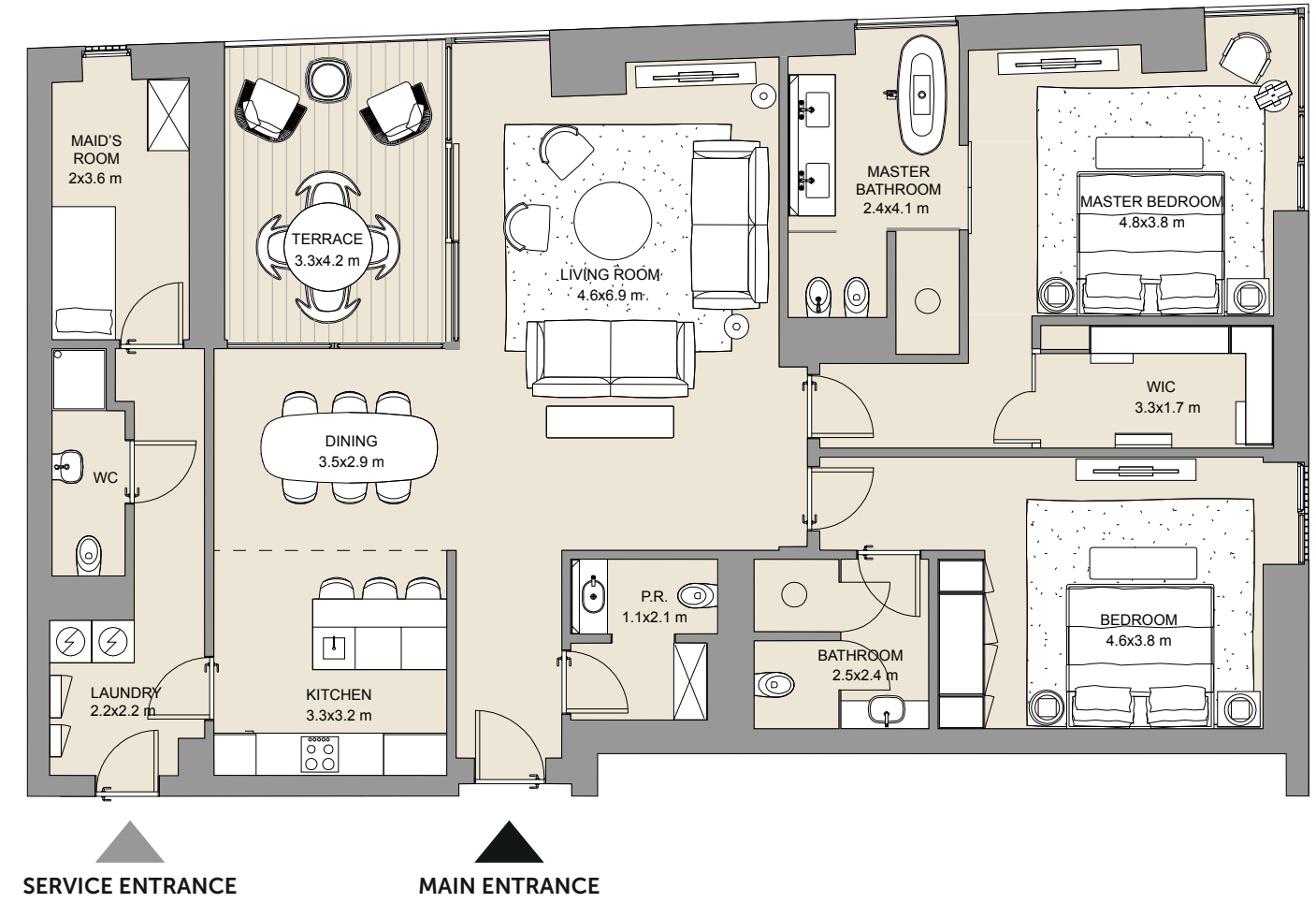
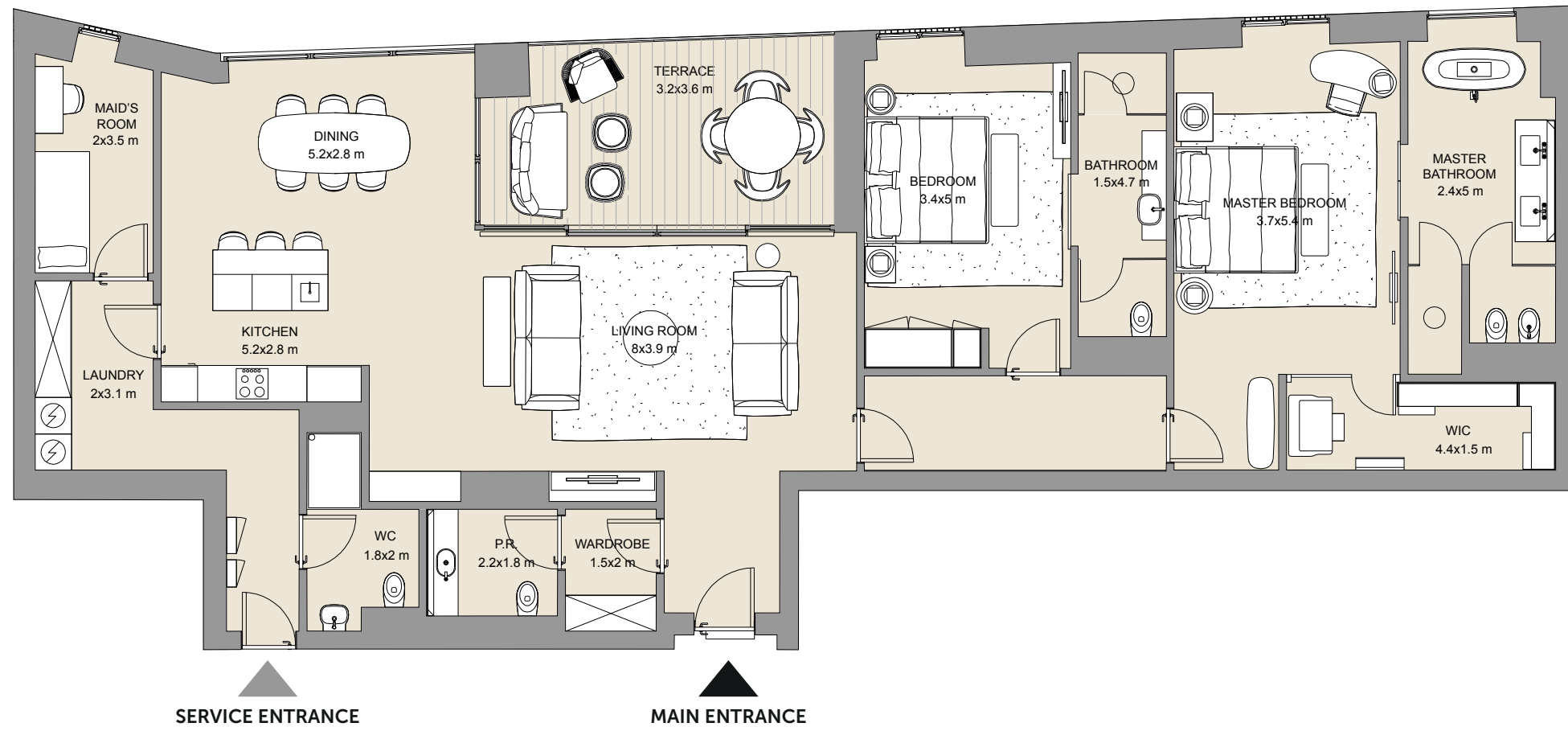


FLOOR SHAPE

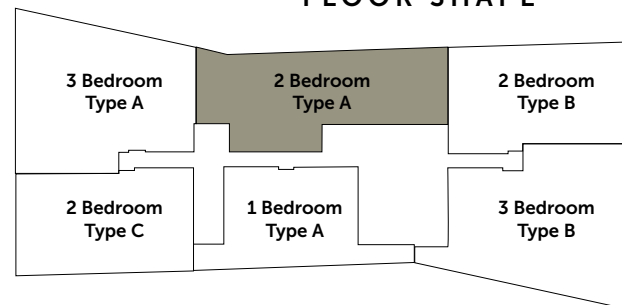


UNITS	NET AREA	BALCONY	TOTAL	TYPE C - VIEW
15	1,288 sq. ft.	192 sq. ft.	1,480 sq. ft.	BLOCK 1 & 3 - SEA + CITY VIEW BLOCK 5 - SEA VIEW

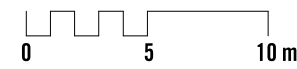




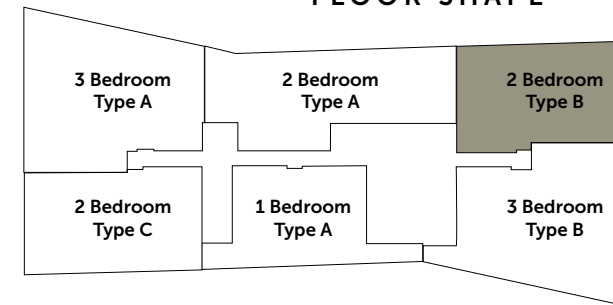
FLOOR SHAPE



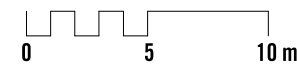
UNITS	NET AREA	BALCONY	TOTAL	TYPE A - VIEW
15	2,053 sq. ft.	188 sq. ft.	2,241 sq. ft.	BLOCK 2, 4 & 6 - MARINA VIEW

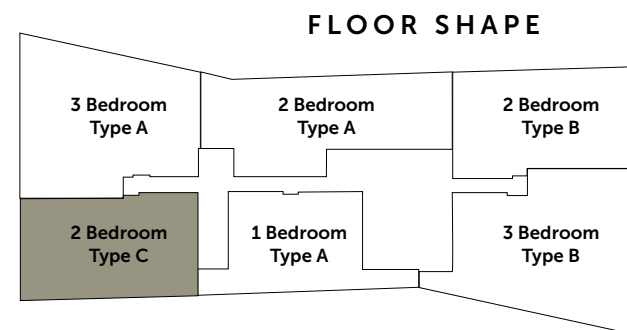
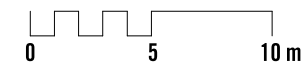
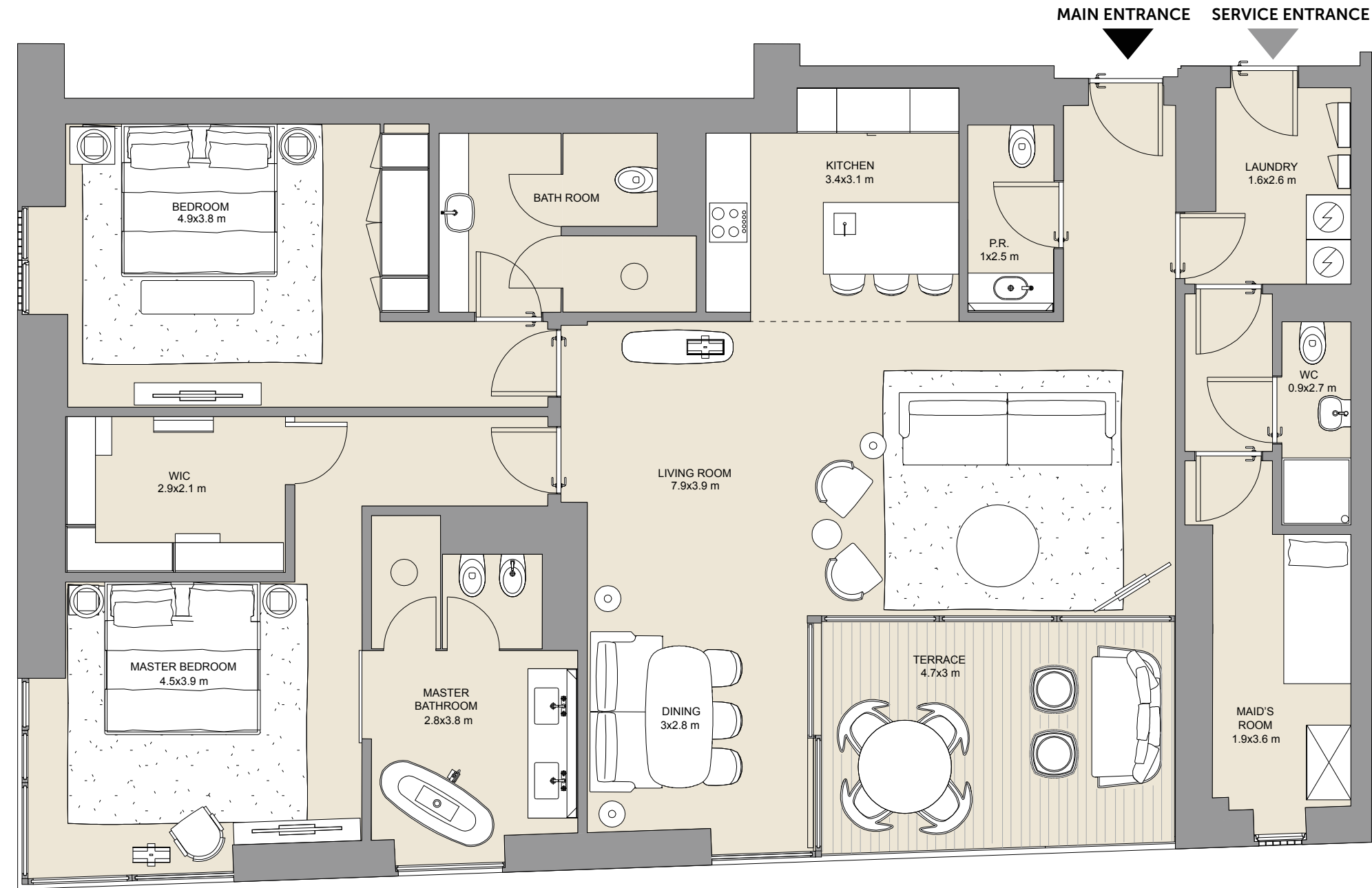


FLOOR SHAPE



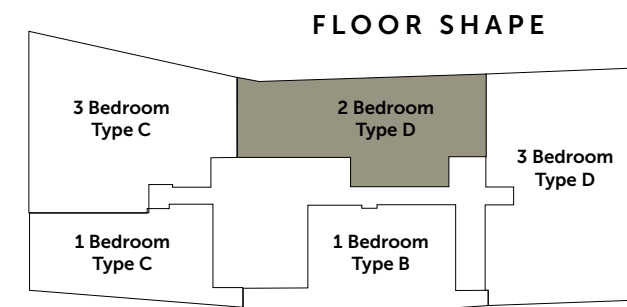
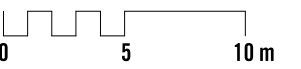
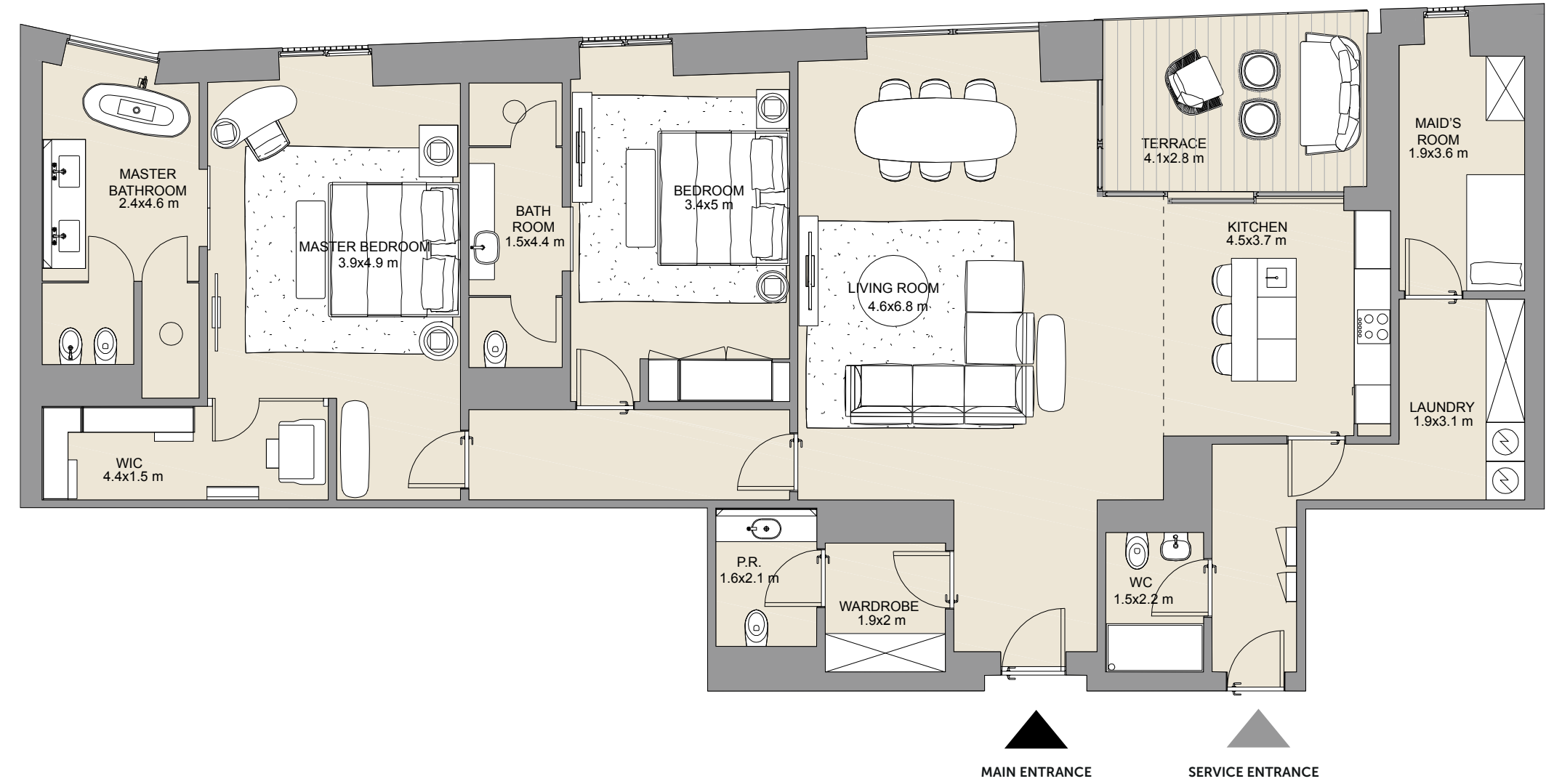
UNITS	NET AREA	BALCONY	TOTAL	TYPE B - VIEW
15	1,779 sq. ft.	145 sq. ft.	1,924 sq. ft.	BLOCK 2, 4 & 6 - MARINA VIEW





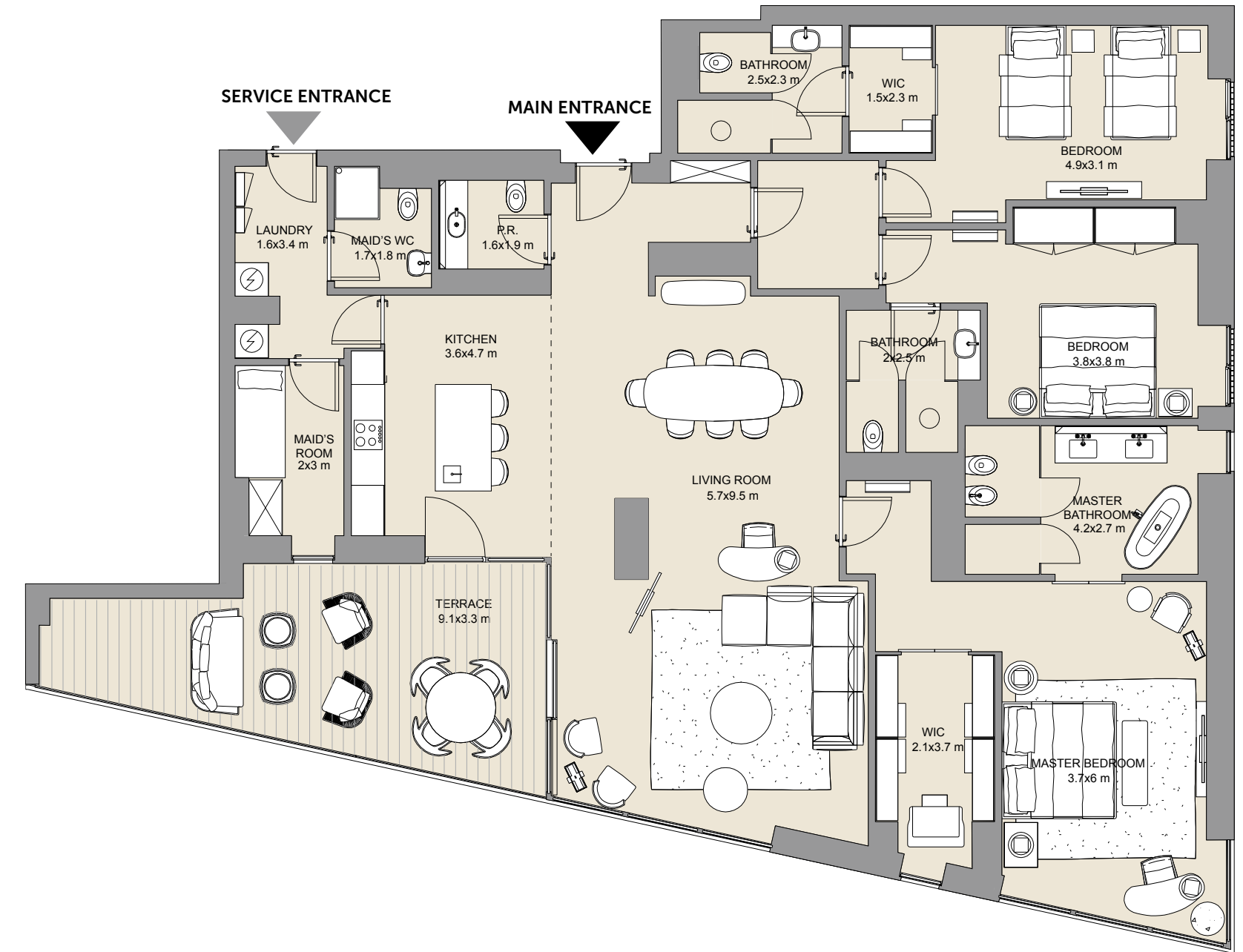
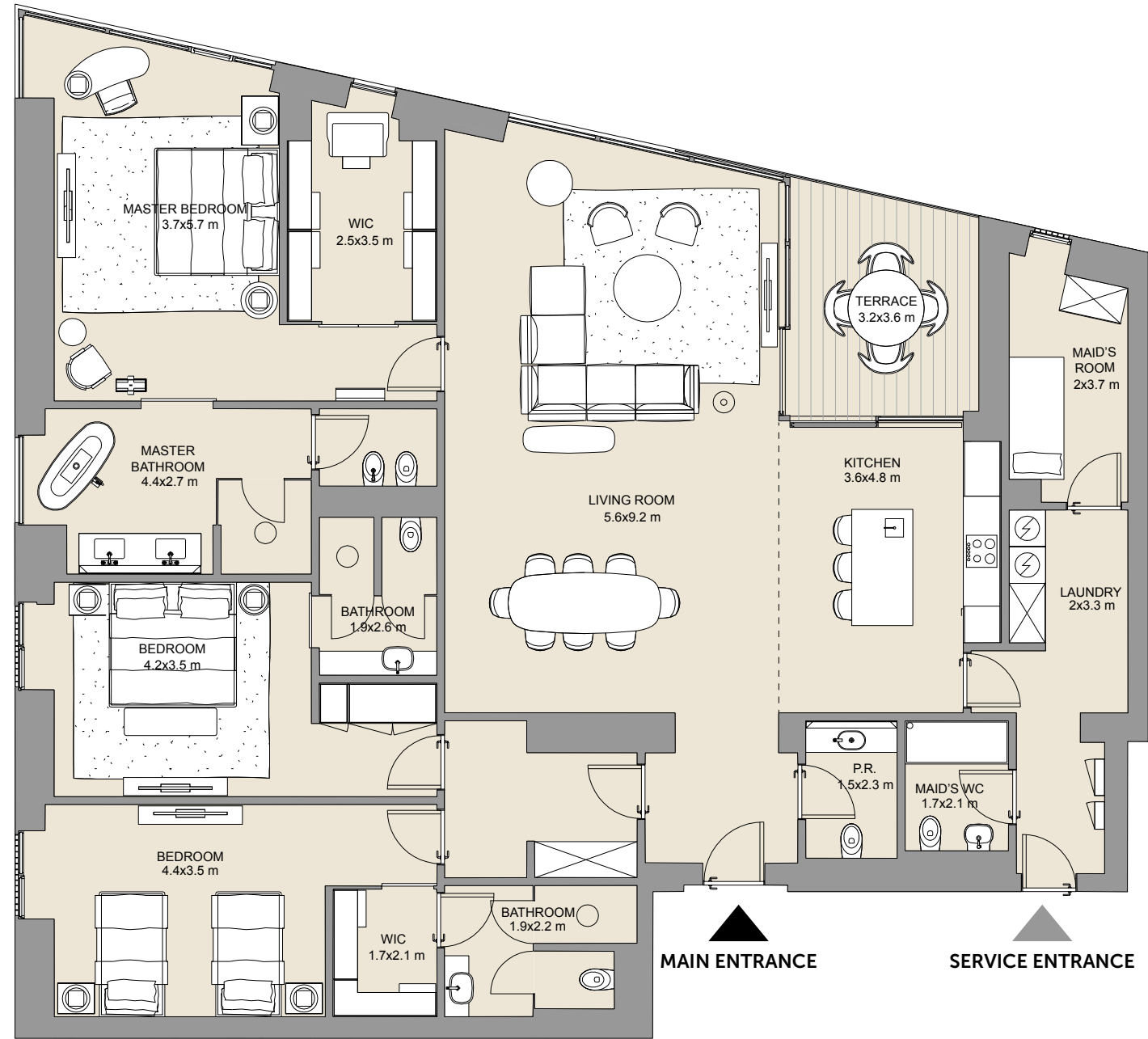
UNITS	NET AREA	BALCONY	TOTAL
15	1,760 sq. ft.	155 sq. ft.	1,915 sq. ft.

**TYPE C - VIEW**  
BLOCK 2 - SEA + CITY VIEW  
BLOCK 4 & 6 - SEA VIEW

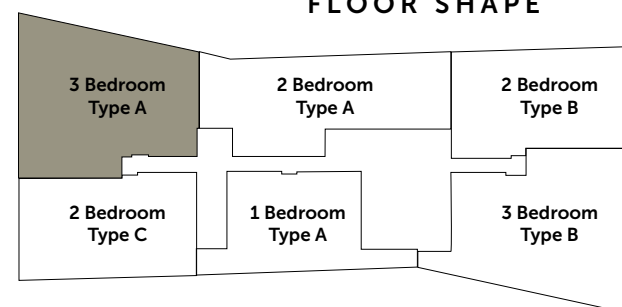


UNITS	NET AREA	BALCONY	TOTAL
15	1,953 sq. ft.	116 sq. ft.	2,069 sq. ft.

**TYPE D - VIEW**  
BLOCK 1, 3 & 5 - MARINA VIEW

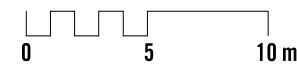


FLOOR SHAPE

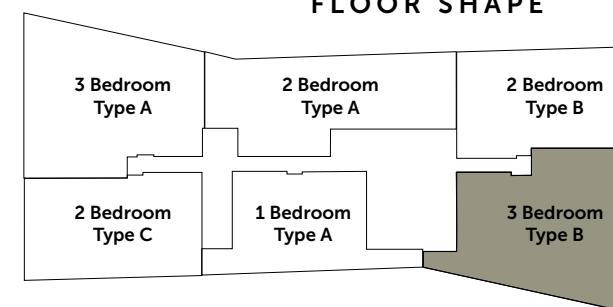


UNITS	NET AREA	BALCONY	TOTAL
15	2,479 sq. ft.	117 sq. ft.	2,596 sq. ft.

**TYPE A - VIEW**  
BLOCK 2, 4 & 6 - MARINA VIEW

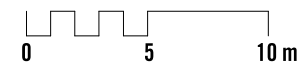


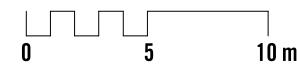
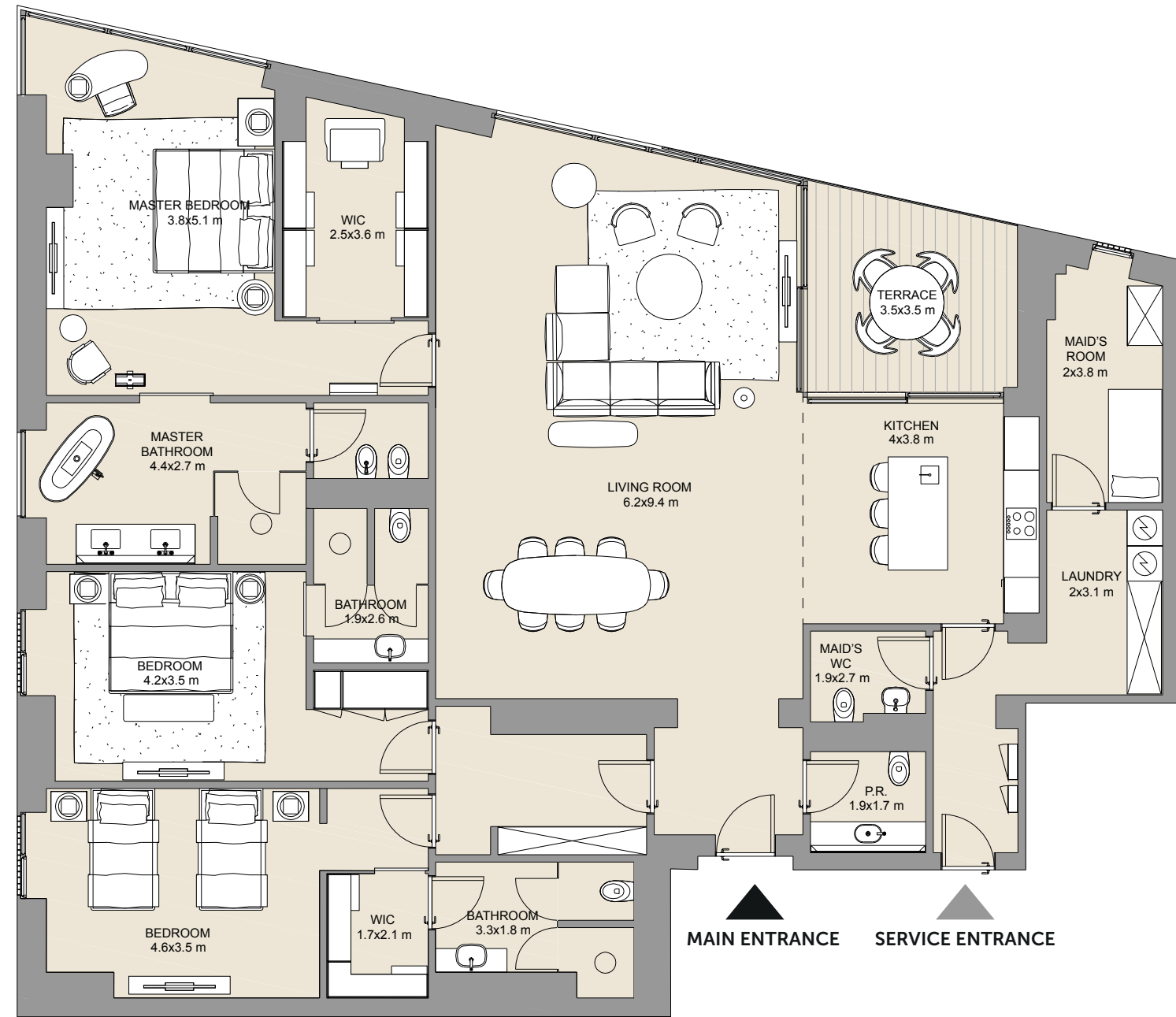
FLOOR SHAPE



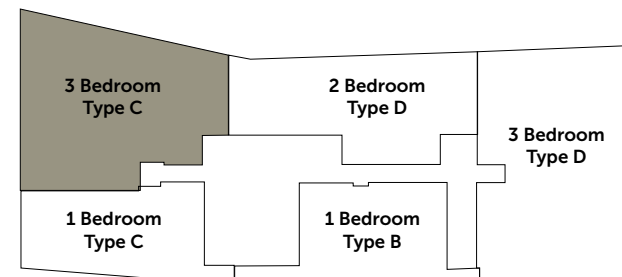
UNITS	NET AREA	BALCONY	TOTAL
15	2,328 sq. ft.	281 sq. ft.	2,609 sq. ft.

**TYPE B - VIEW**  
BLOCK 2 - SEA & CITY VIEW  
BLOCK 4 & 6 - SEA VIEW

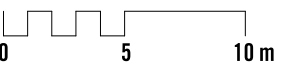
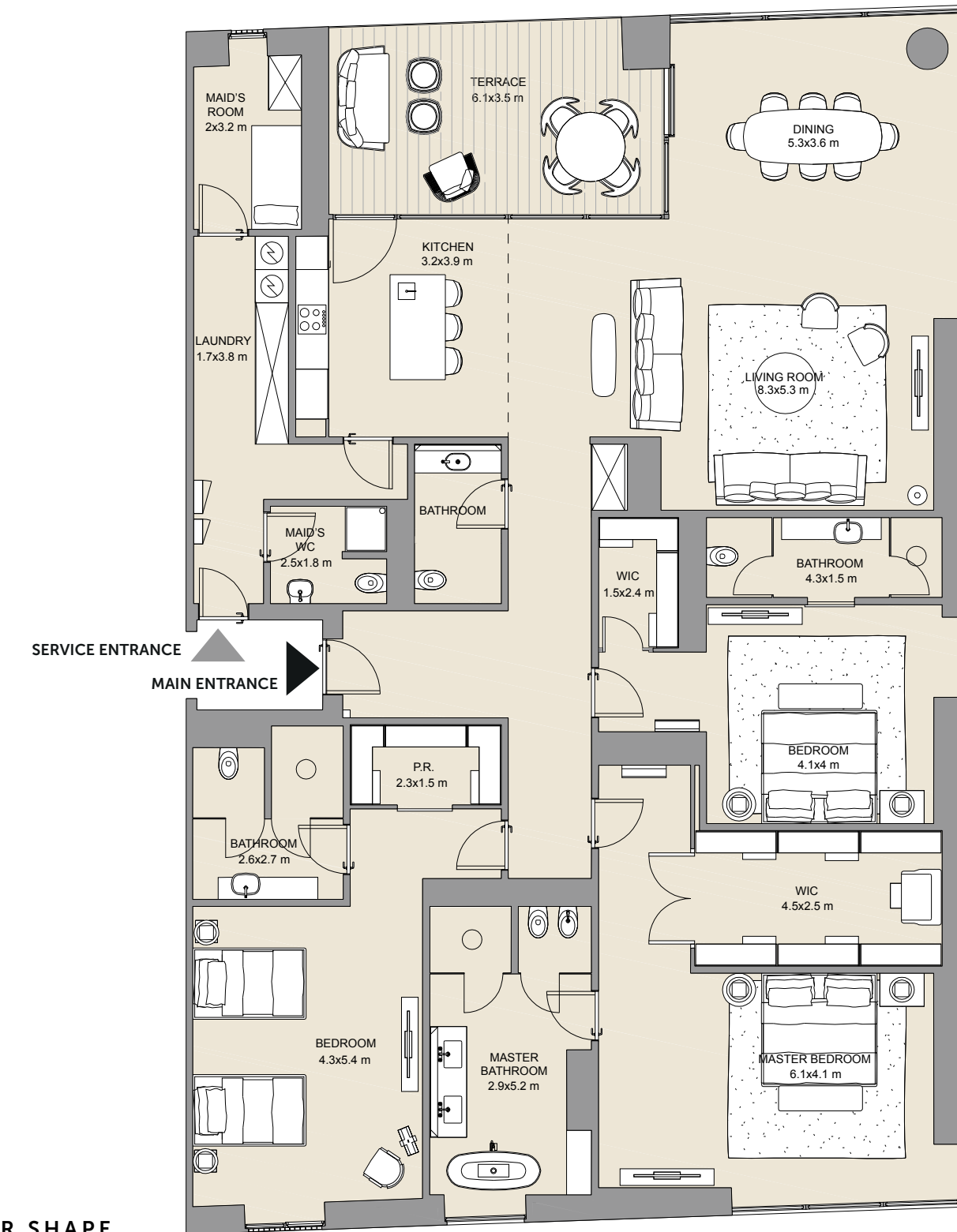




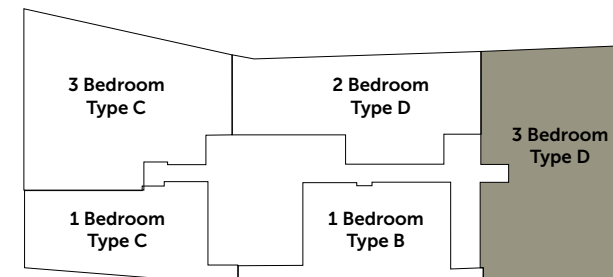
FLOOR SHAPE



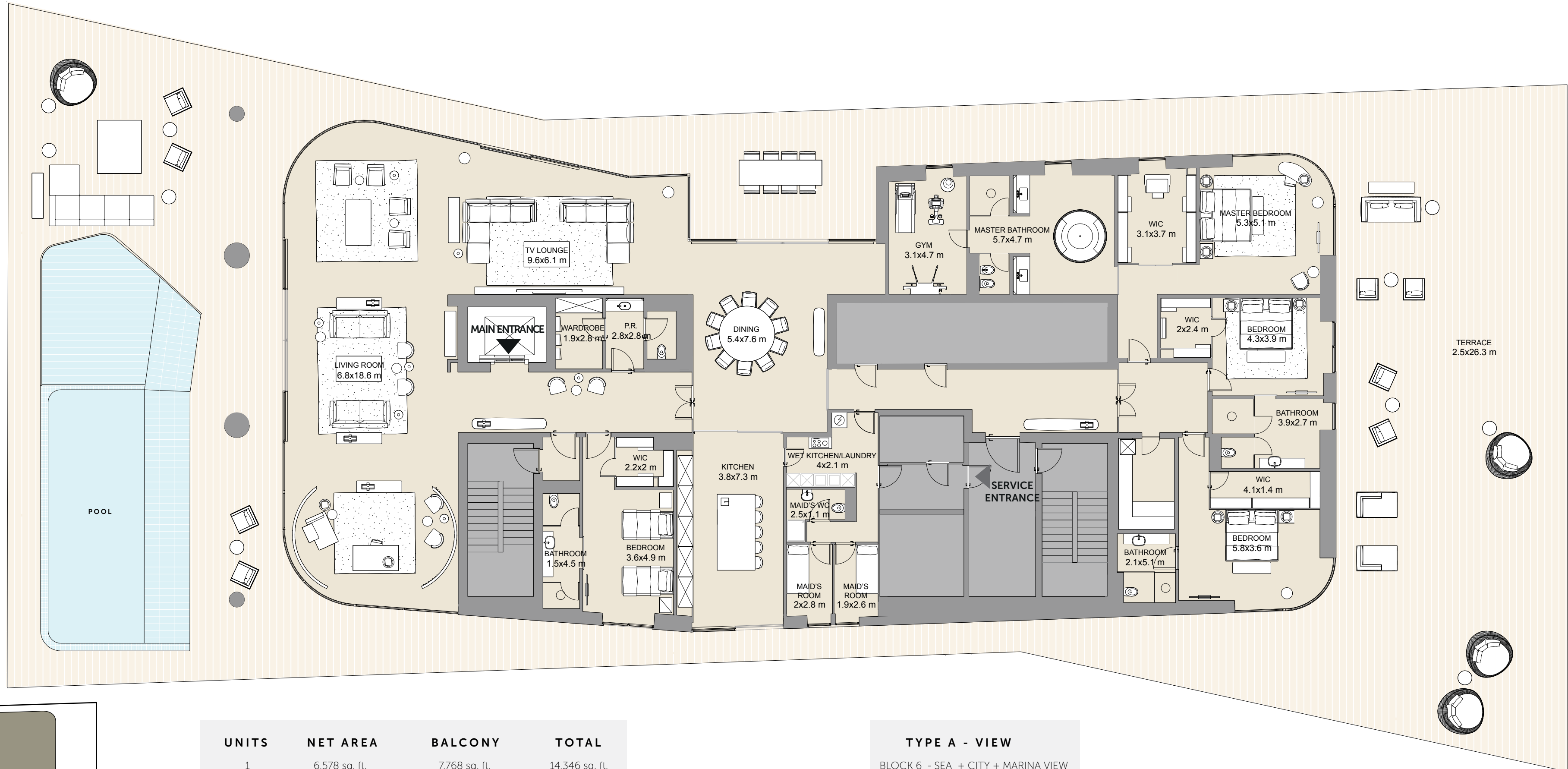
UNITS	NET AREA	BALCONY	TOTAL	TYPE C - VIEW
15	2,576 sq. ft.	118 sq. ft.	2,694 sq. ft.	BLOCK 1, 3 & 5 - MARINA VIEW



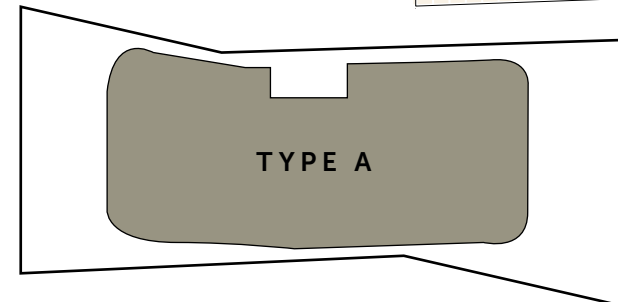
FLOOR SHAPE



UNITS	NET AREA	BALCONY	TOTAL	TYPE D - VIEW
15	2,919 sq. ft.	223 sq. ft.	3,142 sq. ft.	BLOCK 1, 3 & 5 - MARINA VIEW

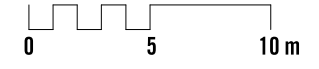


FLOOR SHAPE

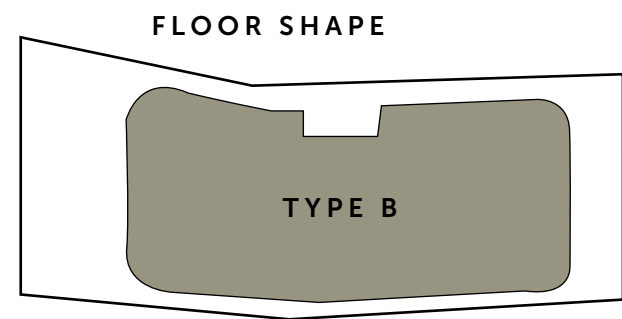
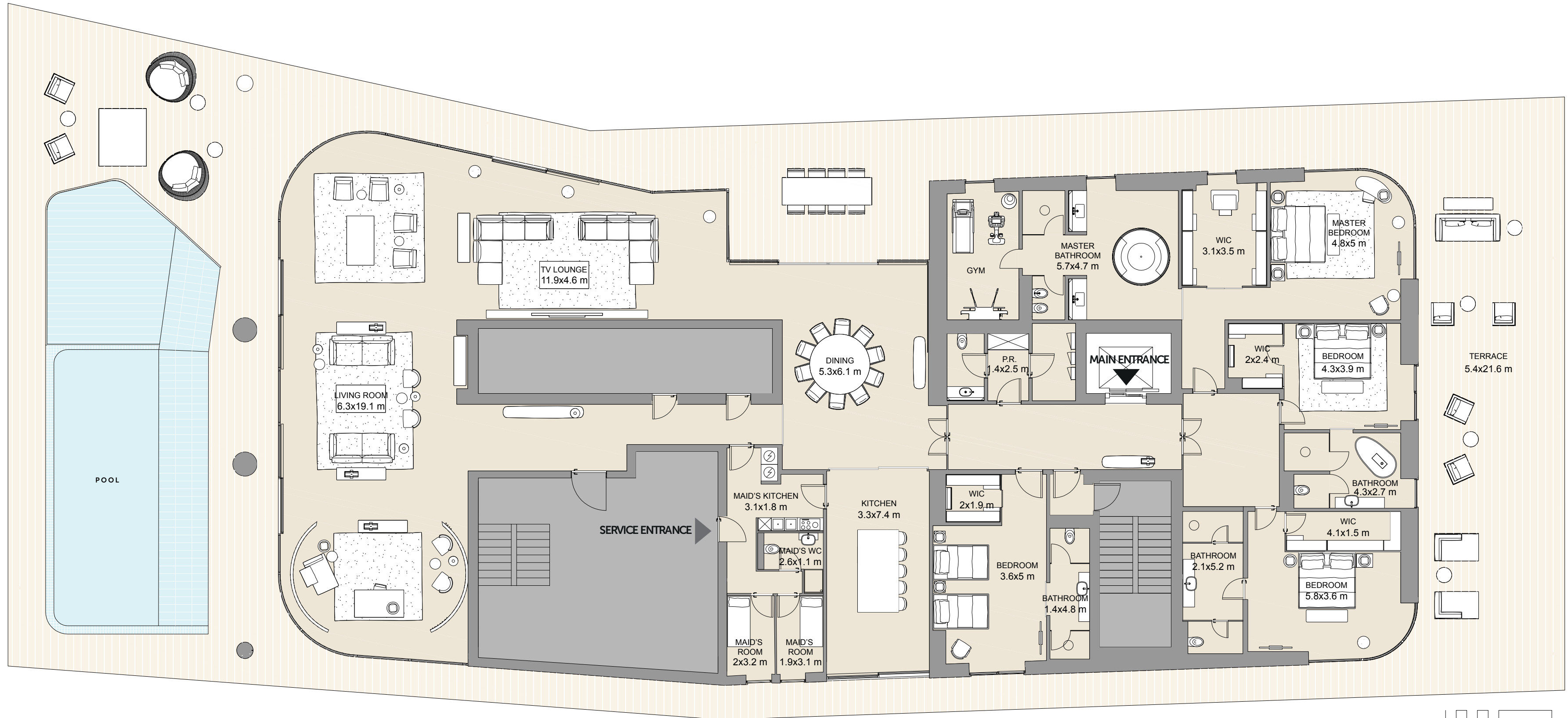


UNITS	NET AREA	BALCONY	TOTAL
1	6,578 sq. ft.	7,768 sq. ft.	14,346 sq. ft.

**TYPE A - VIEW**  
BLOCK 6 - SEA + CITY + MARINA VIEW

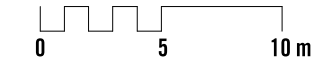


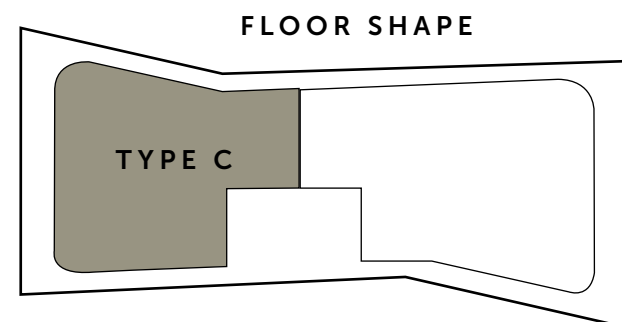
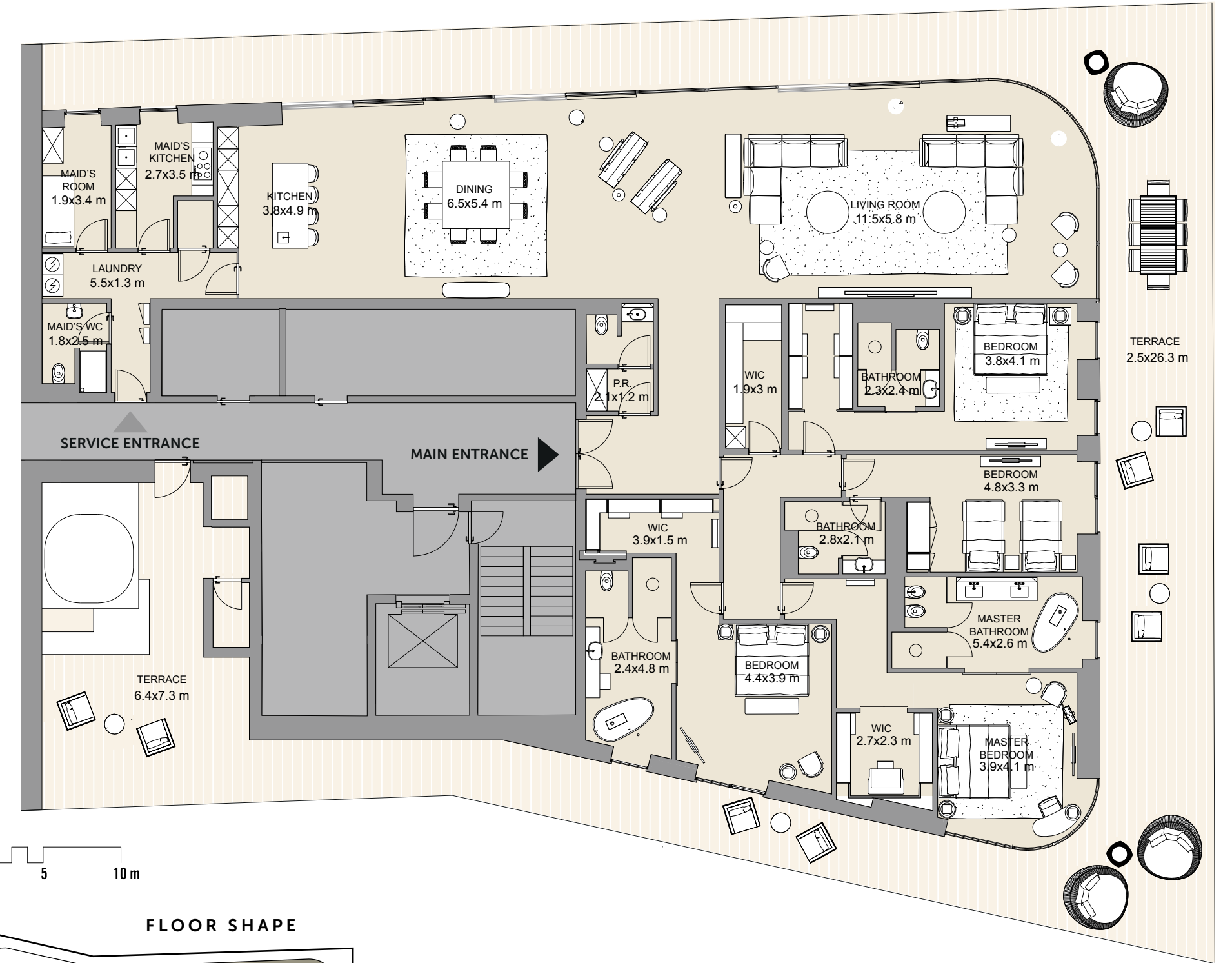
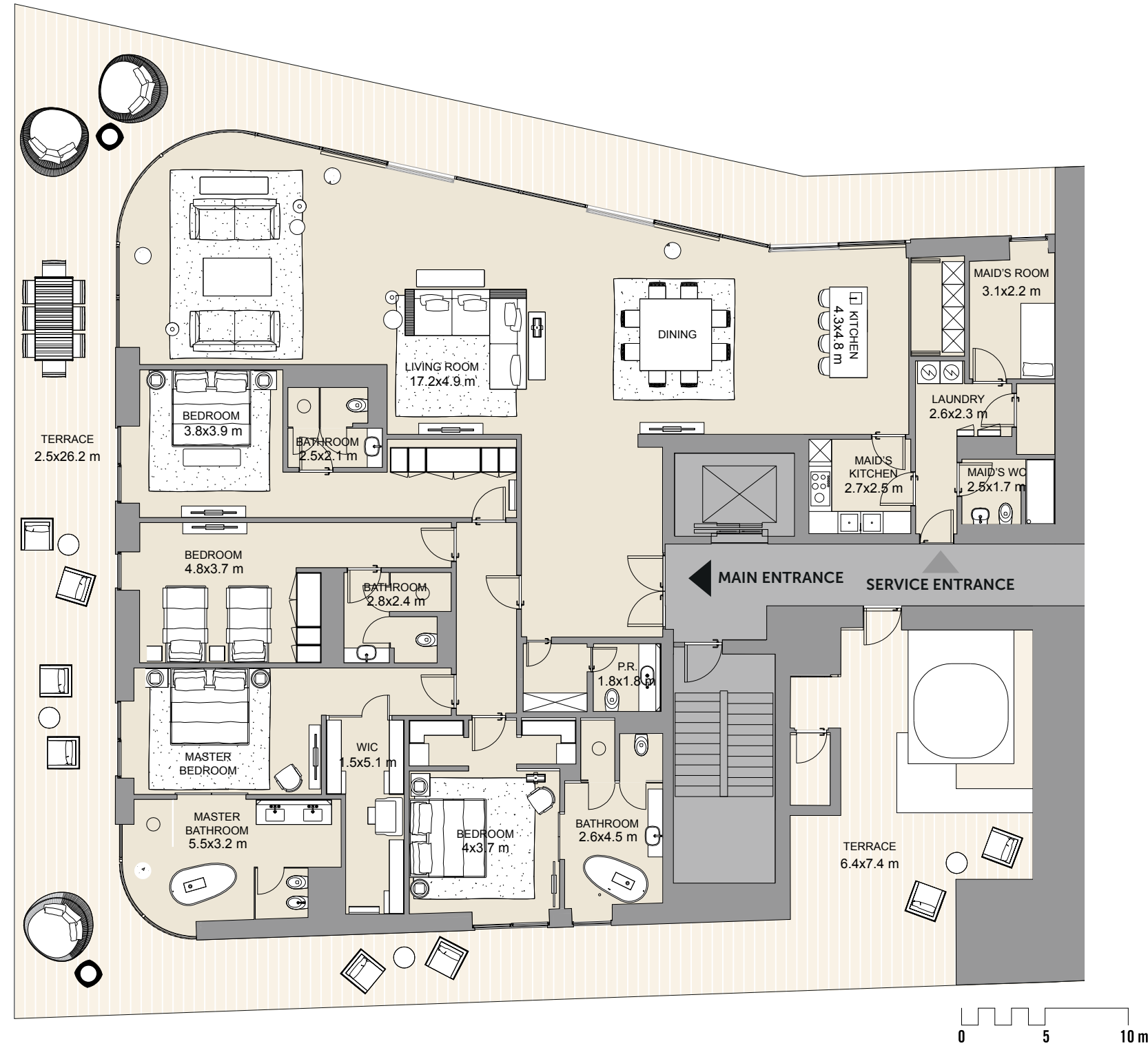




UNITS	NET AREA	BALCONY	TOTAL
3	6,616 sq. ft.	5,506 sq. ft.	12,122 sq. ft.

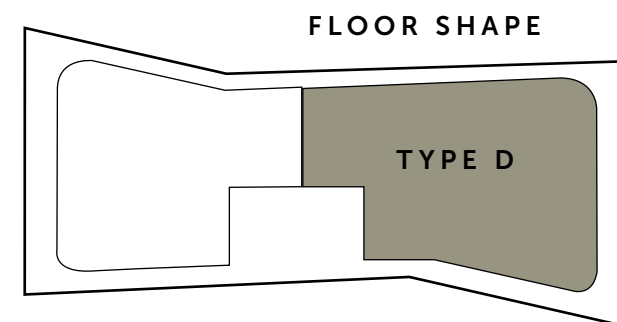
**TYPE B - VIEW**  
BLOCK 1, 3 & 5 - SEA + CITY + MARINA VIEW





UNITS	NET AREA	BALCONY	TOTAL
2	3,963 sq. ft.	2,574 sq. ft.	6,537 sq. ft.

**TYPE C - VIEW**  
BLOCK 2 & 4 - SEA + CITY VIEW

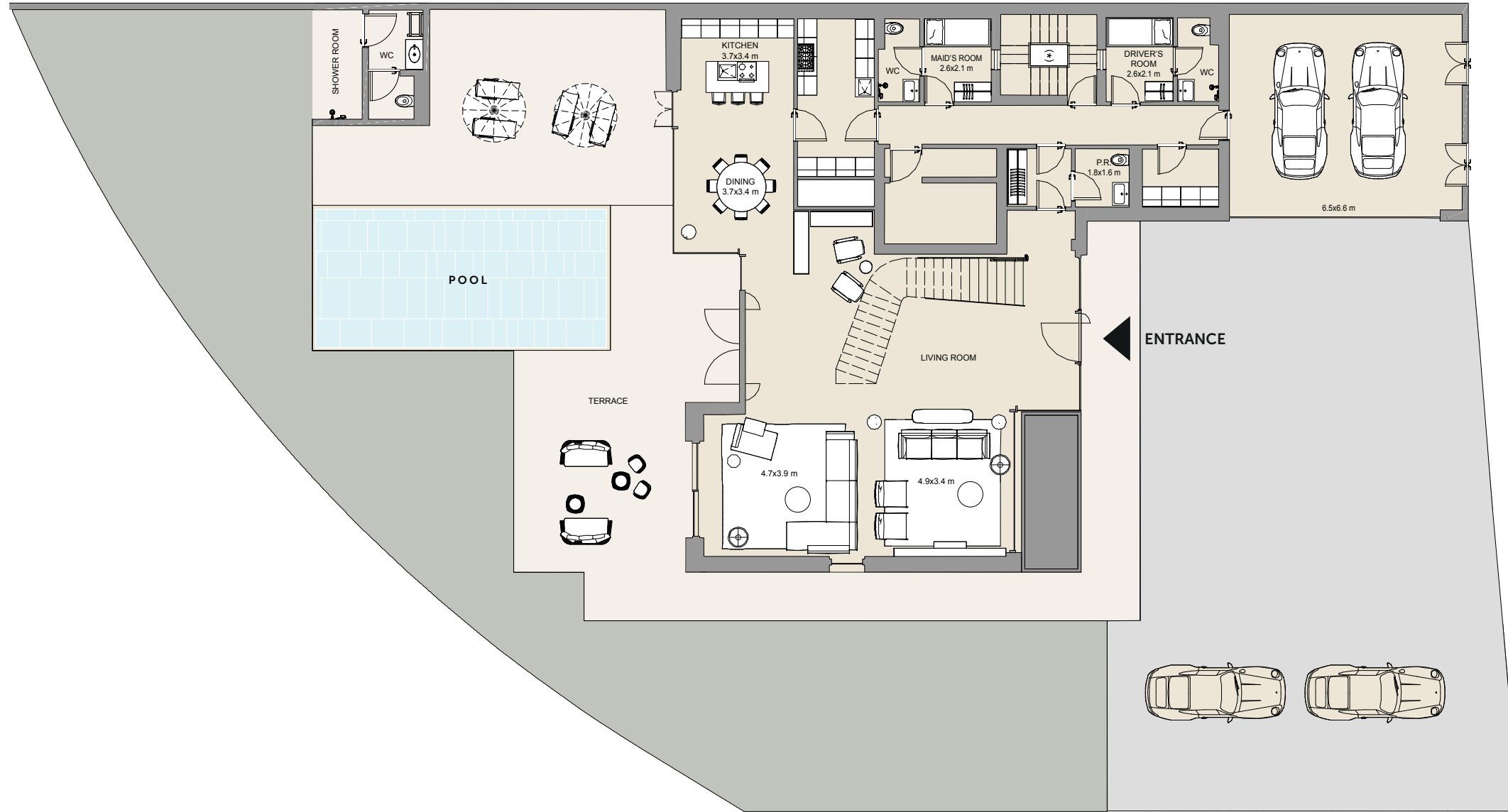


UNITS	NET AREA	BALCONY	TOTAL
2	4,166 sq. ft.	2,776 sq. ft.	6,942 sq. ft.

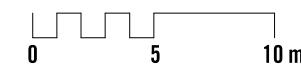
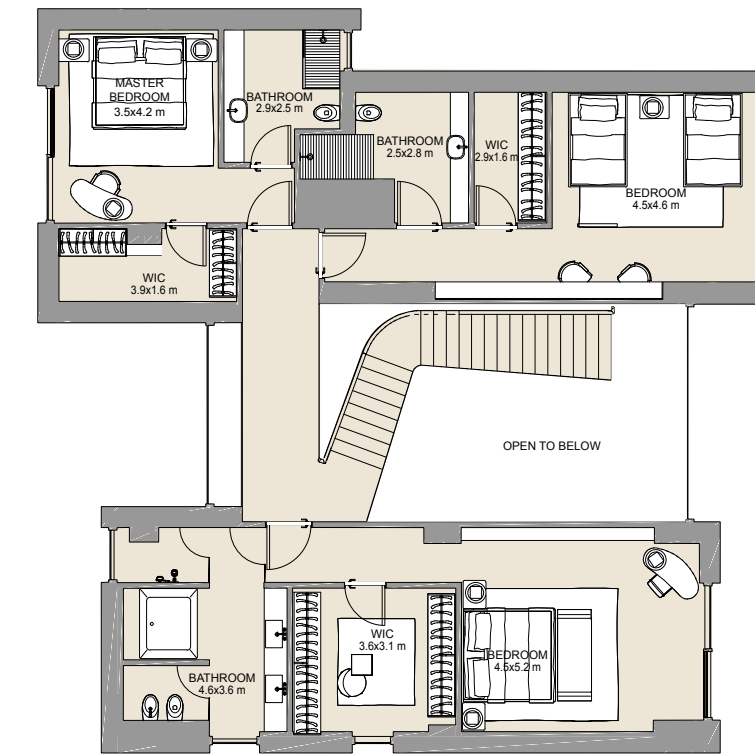
**TYPE D - VIEW**  
BLOCK 2 & 4 - SEA + CITY + MARINA VIEW



**GROUND FLOOR**

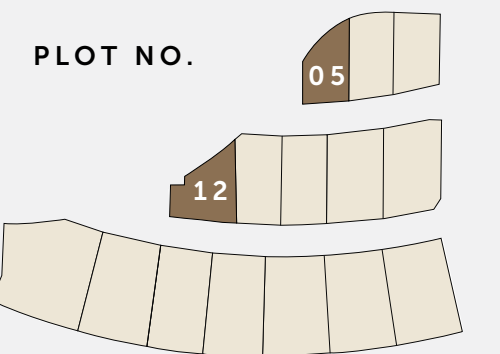


**FIRST FLOOR**

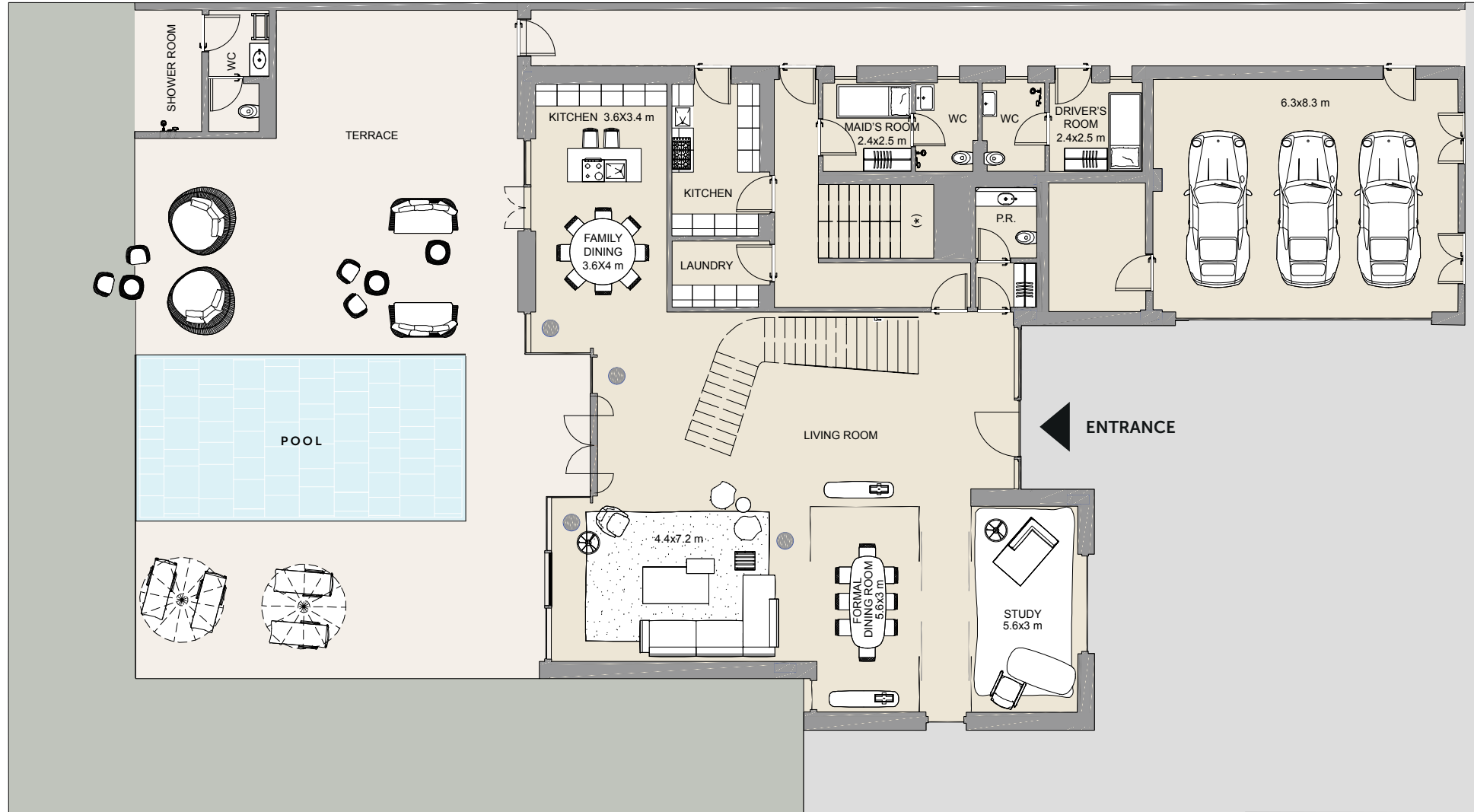


PLOT No.	BUA	PLOT AREA
05	5,081 sq. ft.	10,504 sq. ft.
12	5,081 sq. ft.	10,525 sq. ft.

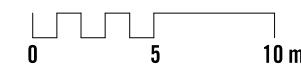
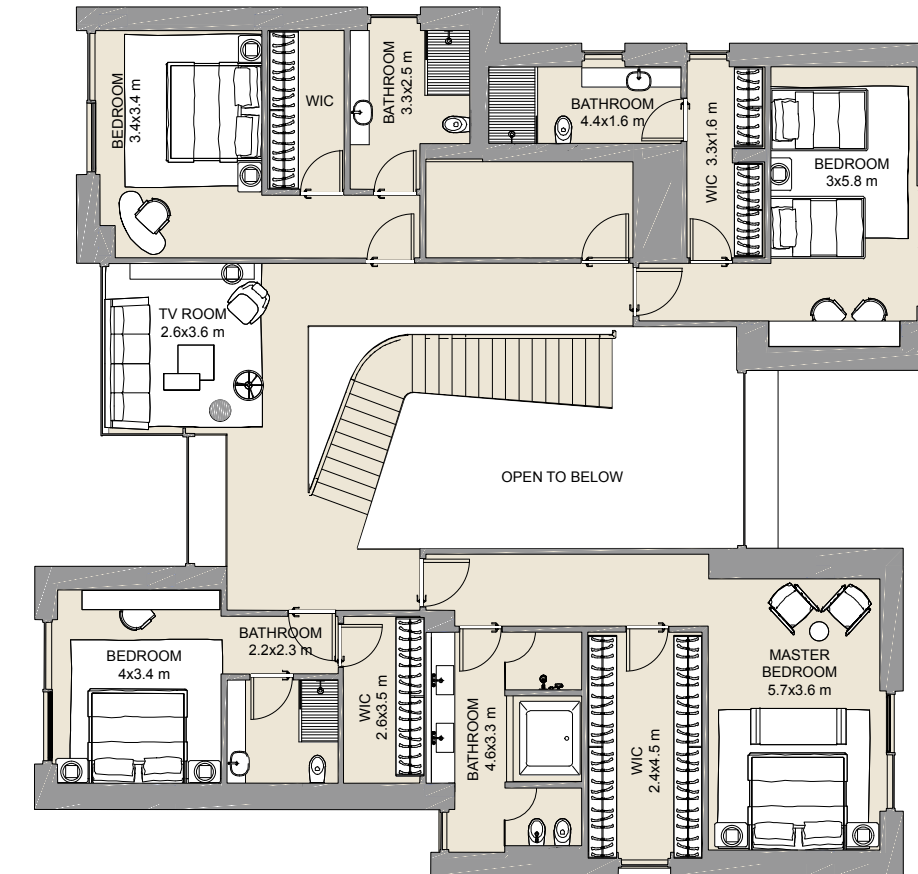
(\*) BASEMENT LEVEL EQUIPMENT ROOM NOT SHOWN



GROUND FLOOR

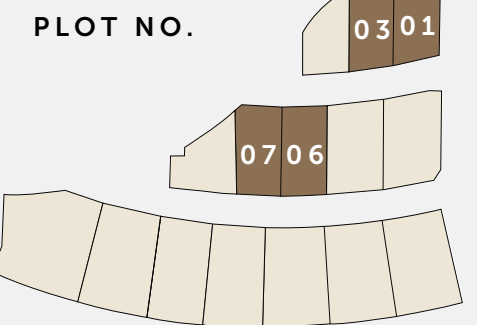


FIRST FLOOR

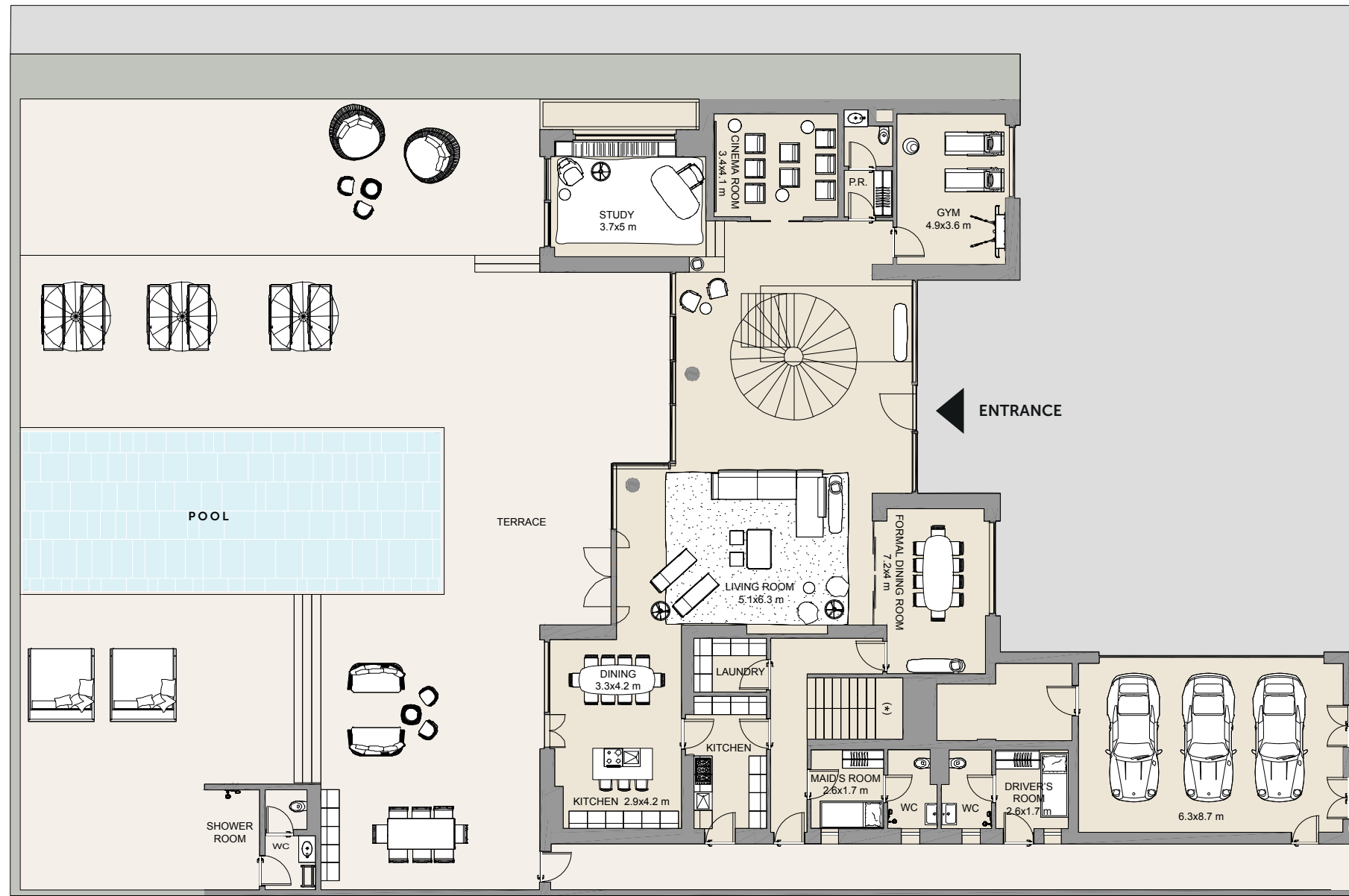


PLOT No.	BUA	PLOT AREA
01	6,272 sq. ft.	11,439 sq. ft.
03	6,272 sq. ft.	12,705 sq. ft.
06	6,272 sq. ft.	13,698 sq. ft.
07	6,272 sq. ft.	13,513 sq. ft.

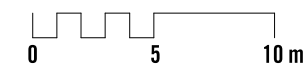
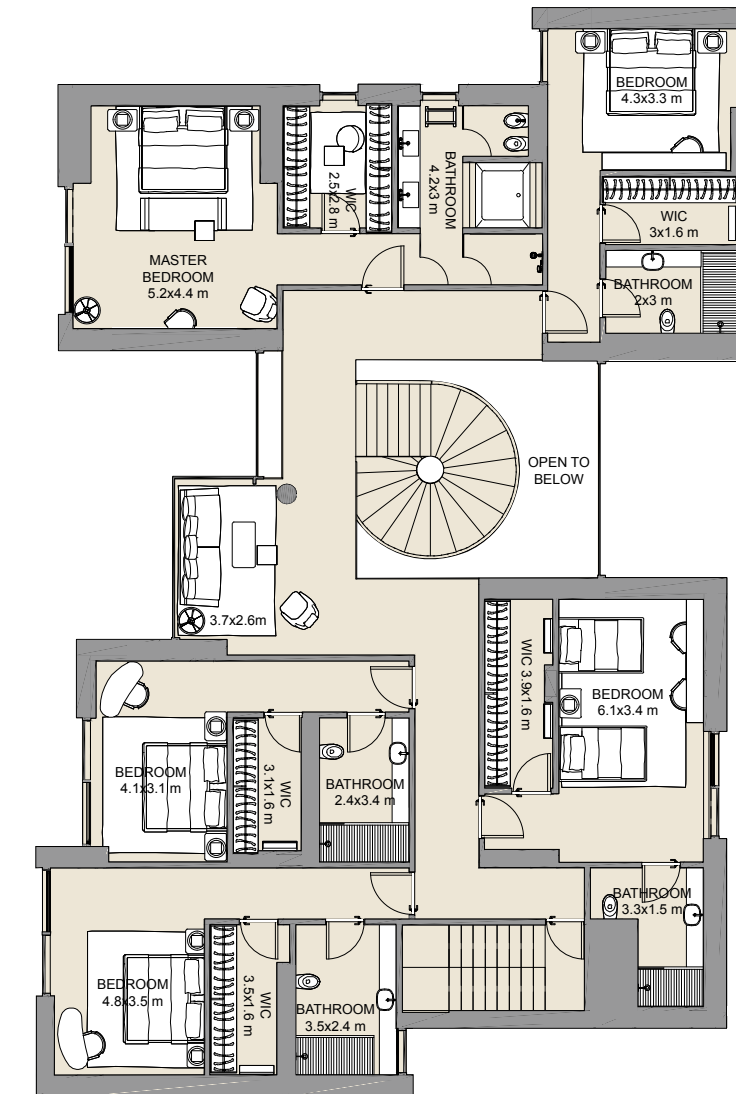
(\*) BASEMENT LEVEL EQUIPMENT ROOM NOT SHOWN



GROUND FLOOR

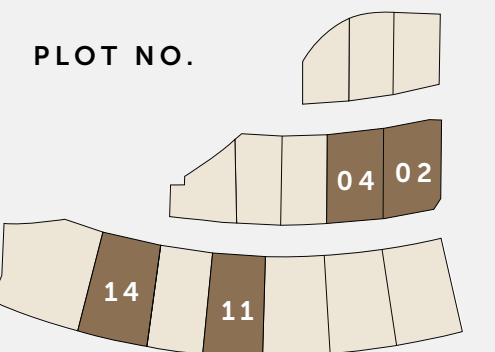


FIRST FLOOR

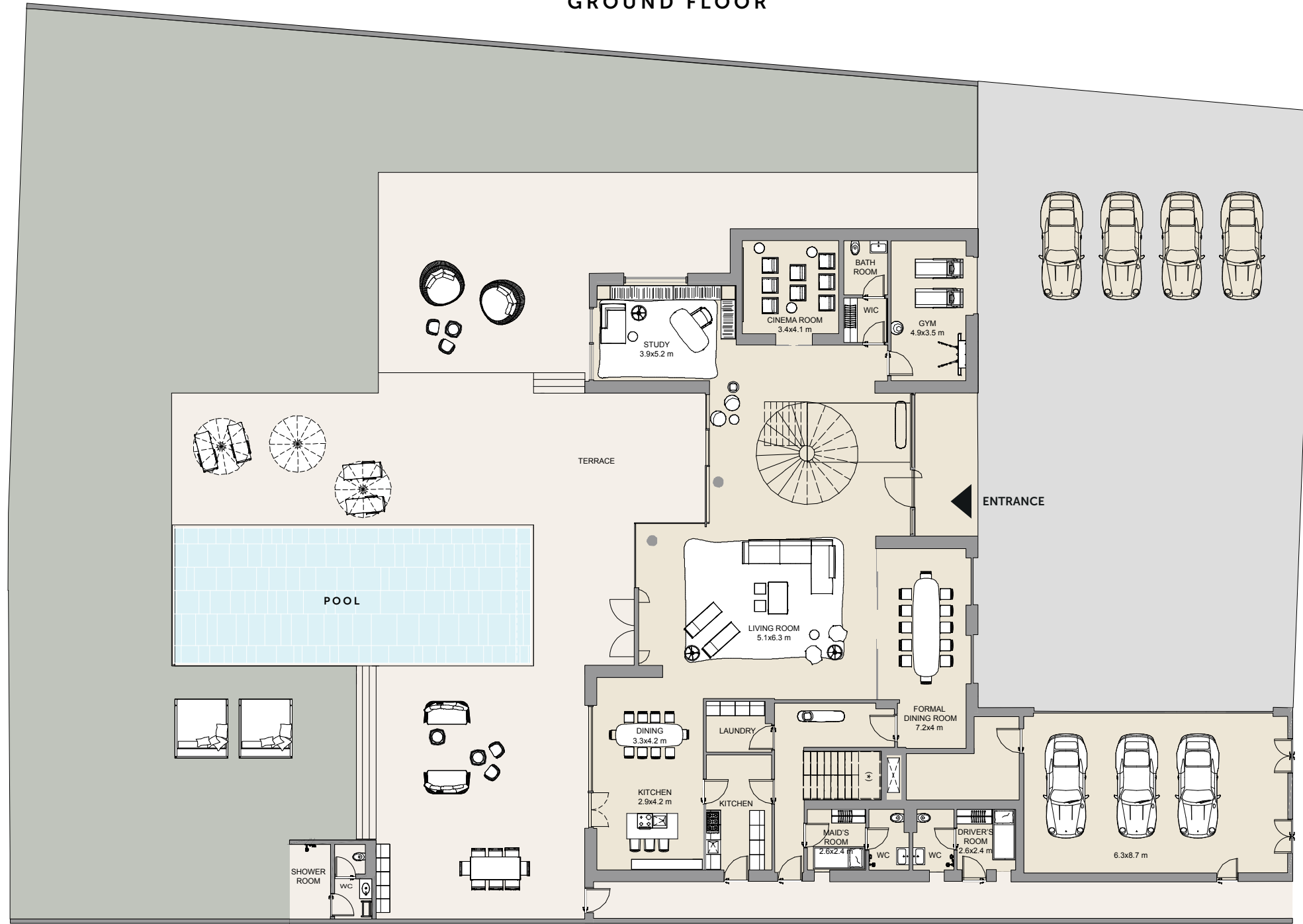


PLOT No.	BUA	PLOT AREA
02	7,353 sq. ft.	17,190 sq. ft.
04	7,353 sq. ft.	17,350 sq. ft.
11	7,353 sq. ft.	19,087 sq. ft.
14	7,353 sq. ft.	19,244 sq. ft.

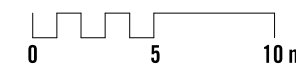
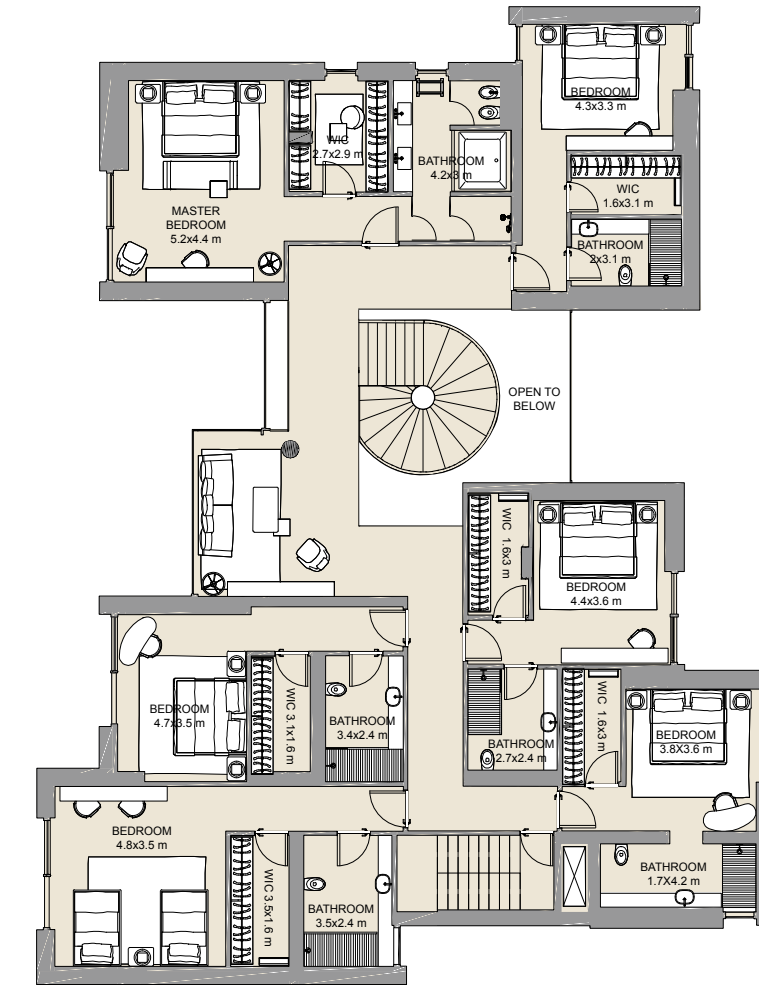
(\*) BASEMENT LEVEL EQUIPMENT ROOM NOT SHOWN



GROUND FLOOR



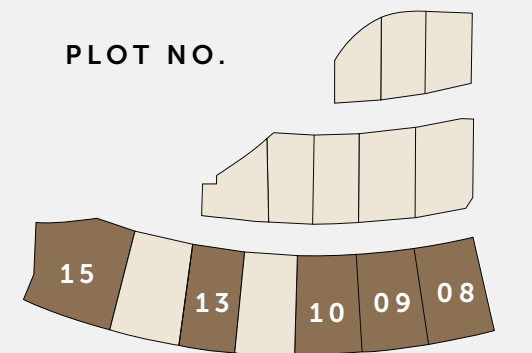
FIRST FLOOR



PLOT No.	BUA	PLOT AREA
08	8,033 sq. ft.	19,949 sq. ft.
09	8,033 sq. ft.	20,221 sq. ft.
10	8,033 sq. ft.	20,627 sq. ft.
13	8,033 sq. ft.	21,306 sq. ft.
15	8,033 sq. ft.	29,113 sq. ft.

(\*) BASEMENT LEVEL EQUIPMENT ROOM NOT SHOWN

PLOT NO.







## THE MARINA AND YACHT CLUB

The Bulgari Marina will comprise over 50 berths and will be able to accommodate boats from 30 to 120 feet. The berths will benefit from all the services of the Hotel, including Housekeeping, Security, Concierge, Florist and on board catering facilities.

The Yacht Club shall be an exclusive members-only facility, with a large outdoor pool and sea side decks, set in a lush landscaped garden. It will also feature a Lounge Bar and Members' Lounge.

### المرسى ونادي اليخوت

يحتوي مرسي بولغري على أكثر من ٥٠ رصيفاً لركن اليخوت، وهذه الأرصفة قادرة على استيعاب القوارب واليخوت التي يتراوح طولها بين ٣٠ و١٢٠ قدماً. وسيستفيد أصحاب اليخوت من جميع الخدمات المقدمة من الفندق، بما في ذلك التنظيف والأمن والحراسة والتزود بالطعام وغيرها من الخدمات.

كما سيكون نادي اليخوت حصرياً للأعضاء فقط، وسيحتوي على بركة سباحة خارجية كبيرة وإطلالة على البحر ضمن حديقة خلابة وجميلة، إضافة إلى مطعم وهدية للأعضاء.





## THE PROMENADE

The pedestrian-only Promenade will connect the Bulgari Hotel building with the Yacht Club. Inspired by Italian sea-side harbours like Portofino, it will host six independent world famous restaurants, which will provide residents and guests with the finest culinary experiences.

### الممشى

يربط الممشى المخصص للمارة فقط بين مبنى فندق بولغاري ونادي اليخوت. ويستوحى الممشى تصميمه من موانئ بحرية إيطالية مثل ميناء بورتوفينو، وسيضم ستة مطاعم عالمية مستقلة توفر للسكان والزلاء تجارب غنية وفريدة من نوعها من مطابخ مختلفة.

M E R A A S . C O M

**Meraas Holding  
Dubai, United Arab Emirates  
800-MERAAS (637227)  
BV@MERAAS.AE**

#### **DISCLAIMER**

Confidentiality and disclosure of information: All of the data, images, plans and information in this document are confidential and no part may be reproduced, distributed, disclosed or communicated to any other third party without our prior written approval. It may only be used for the purposes of determining whether to purchase property as described in this document.

No representation and no liability: We make no representation or warranty, express or implied that this document or the data, imaged, plans and information contained herein or the assumptions on which they are based are accurate, complete or up to date and they should not be relied upon as such. Any plans, photos, and computer generated images shown are indicative only and cannot be guaranteed to represent the complete interiors/exterior of a scheme. Any areas, measurements or distances given are approximate only. Any products and materials shown or indicated are indicative only and may be subject to variations or change. It is not possible to scale from any drawings and any reference to alterations to or use of any part of the property is not a statement that any necessary planning, building regulations or other consent has been obtained. These matters must be verified by any buyer/lessee. Any buyer/lessee must satisfy themselves by inspection or otherwise as to the correctness of any information given. Further design development is anticipated and the photograph's artist's impression(s), computer generated images and any description of detail or specification are intended as guidance only and may alter as works progress We accept no liability for any direct, indirect or consequential loss or damage suffered by any person as a result of relying on all or any part of this document and any liability is expressly disclaimed nor do we accept any liability if this document and the information contained herein is used for an alternative purpose from which it is intended, nor to any third party. Indicative terms only; no recommendation: This document contains only preliminary project information and images for illustrative purposes only. It does not purport to and is not intended to contain all of the information that may be required to evaluate and be relied on in connection with any potential purchase of property or considered as a recommendation by any person for you to participate in any potential transaction. We do not undertake, or expect, to update, correct or otherwise revise this document and the information contained herein at any time. Any proposed terms in this document are indicative only and remain subject to contract on such terms as directed by us.

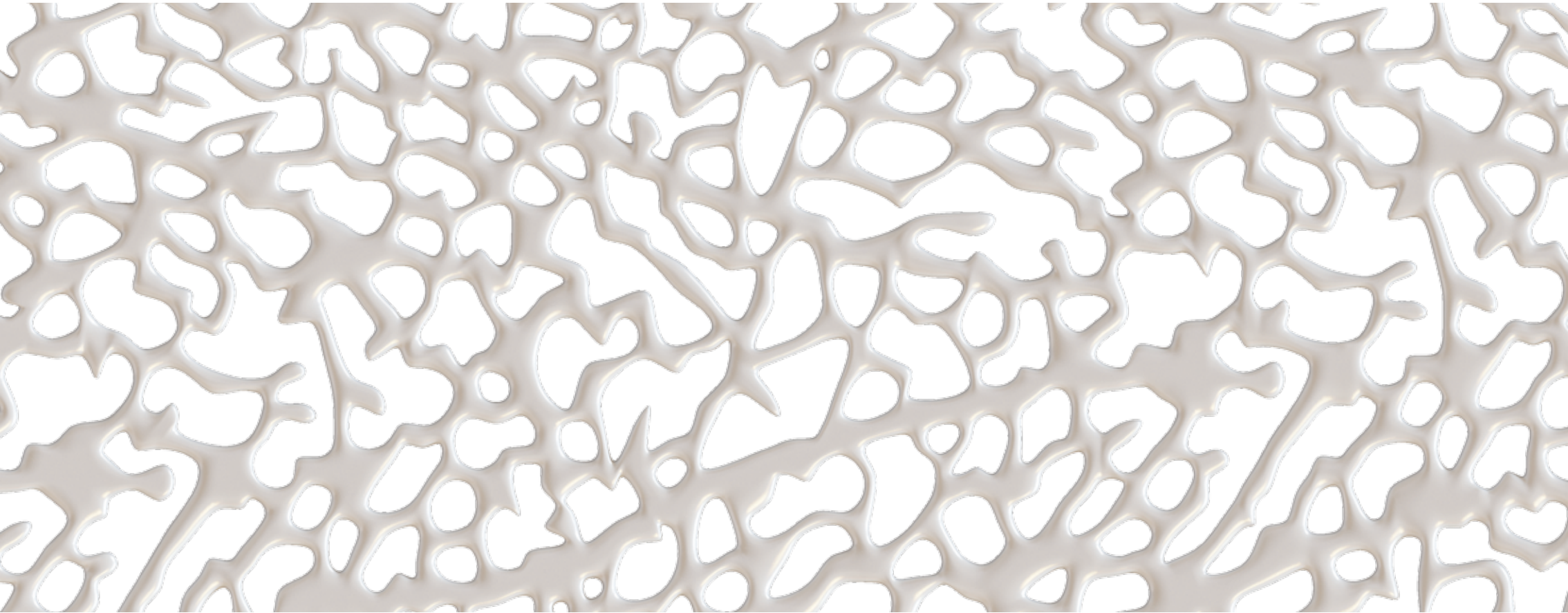
No offer: This document is not intended to create legal relations between us and is not an offer or commitment with respect to the sale of property and creates no obligation or liability on us to arrange or sell any property to you and all discussions relating thereto remain strictly subject to contract.

Licensed Trademark: The scheme and no part of the scheme is owned, developed or sold by the Bulgari/Marriott parties nor will any part of the scheme be owned or managed by the Bulgari/Marriott parties. The Bulgari/Marriott parties have not confirmed or checked the accuracy of the any of the information provided by Meraas or by its independent agents or any of its agents, employees or advisers and the Bulgari/Marriott parties assume no responsibility for such information. The Bulgari/Marriott parties do not act as agents for Meraas nor do they act as broker, finder or agent in connection with the sale of the scheme. No buyer or purchaser of any part of the scheme shall have the right to use or have any interest in the BVLGARI brand or name ("the Licensed Mark") and the use thereof will be strictly controlled by the terms of any sale and purchase agreement to be entered into by any buyer or purchaser of any part of the scheme and any such buyer or purchaser unconditionally waives and releases the Bulgari/Marriott parties in respect of any representation, defects, use of deposits or any claim whatsoever relating to the marketing, sale, design or construction or completion of any part of the scheme. The Bulgari/Marriott parties have no involvement in the provision of any hotel services to any part of the scheme and the buyer or purchaser of any part of the scheme should be aware that the license agreement permitting the use of the Licensed Mark may be terminated at any time in accordance with the terms of the licenses and agreements entered into between Meraas and the Bulgari /Marriott parties and the purchaser acknowledges and agrees that it shall have no recourse against the Bulgari/Marriott parties in the event that the use of the Licensed Mark ceases or terminates.

\* MERAAS BAY AND RESIDENCES LLC, is a company organized and existing under the laws of Dubai, United Arab Emirates, with its registered office at P.O. Box 123311, Dubai, United Arab Emirates and is the owner and developer of the scheme.

\*\* Bulgari S.p.A. or Marriott International, Inc. or any of its affiliates referred to herein as the "Bulgari/Marriott parties."

A DEVELOPMENT BY



 **MERAAS**