

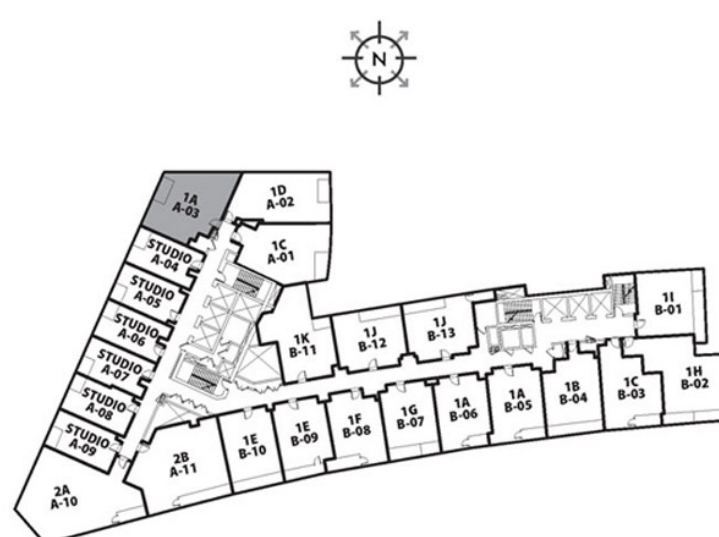
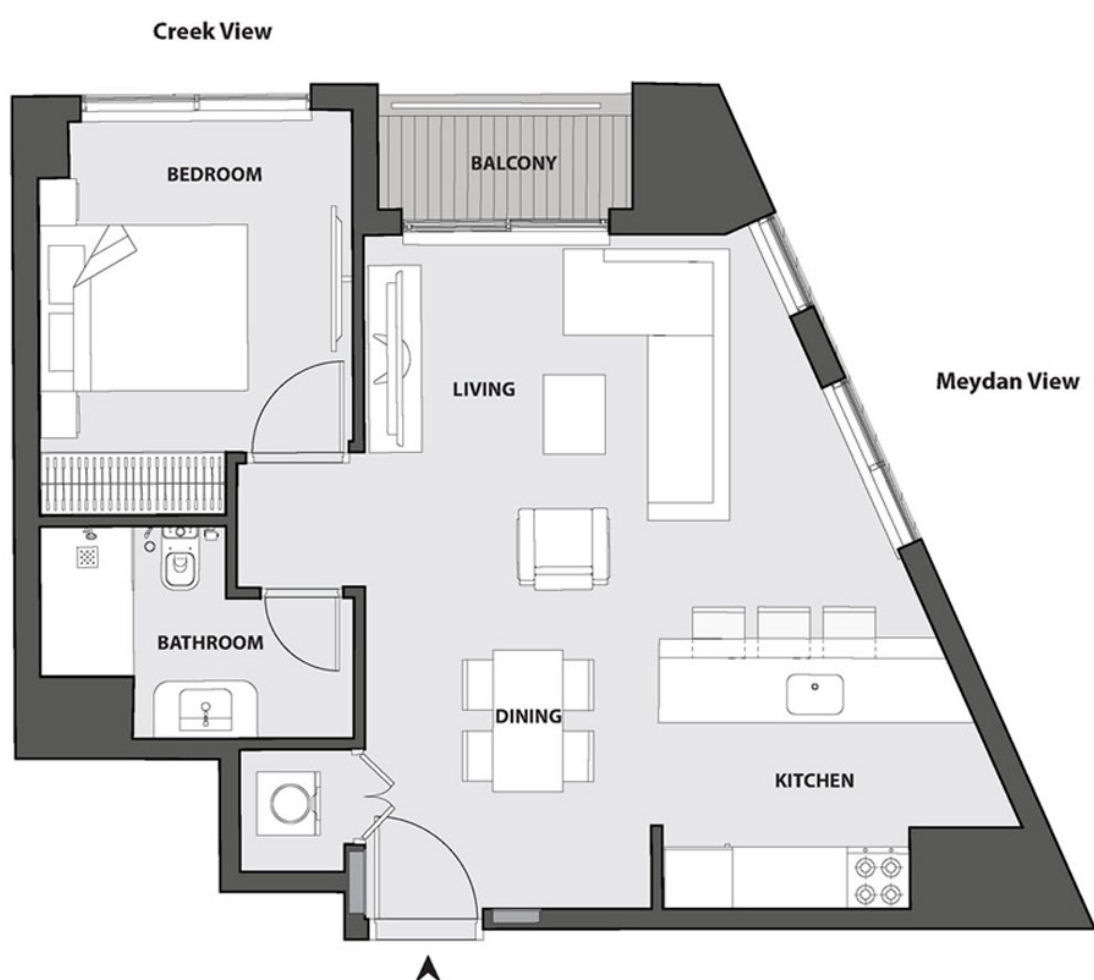
**15 NORTHSIDE**  
5% RESERVATION FEE UPFRONT



# 1 Bedroom - 1A

## 1 BEDROOM

Tower A | Type 1A | Unit No. 03 | 1<sup>st</sup> - 21<sup>st</sup> Floor



|                   |                            |                              |
|-------------------|----------------------------|------------------------------|
| Apartment Area    | 58.41 m <sup>2</sup>       | 628.72 ft <sup>2</sup>       |
| Balcony Area      | 3.15 m <sup>2</sup>        | 33.91 ft <sup>2</sup>        |
| <b>Total Area</b> | <b>61.56 m<sup>2</sup></b> | <b>662.63 ft<sup>2</sup></b> |

Drawings are provided by our consultants. All dimensions, features and amenities are approximate at time of printing. Actual size may vary from stated area. Drawings not to scale E & OE. The developer reserves the right to make revisions to the floor plans and any features, materials and dimensions mentioned without further notice.

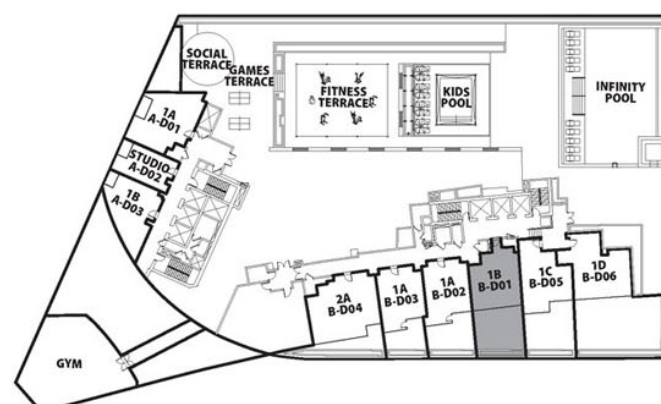
# 1 Bedroom - 1B

## 1 BEDROOM

Tower B | Unit D01 | Deck Floor



|                   |                            |                                |
|-------------------|----------------------------|--------------------------------|
| Apartment Area    | 50.26 m <sup>2</sup>       | 540.99 ft <sup>2</sup>         |
| Balcony Area      | 43.07 m <sup>2</sup>       | 463.60 ft <sup>2</sup>         |
| <b>Total Area</b> | <b>93.33 m<sup>2</sup></b> | <b>1,004.59 ft<sup>2</sup></b> |



Drawings are provided by our consultants. All dimensions, features and amenities are approximate at time of printing. Actual size may vary from stated area. Drawings not to scale E & OE. The developer reserves the right to make revisions to the floor plans and any features, materials and dimensions mentioned without further notice.



# 1 Bedroom - 1C

## 1 BEDROOM

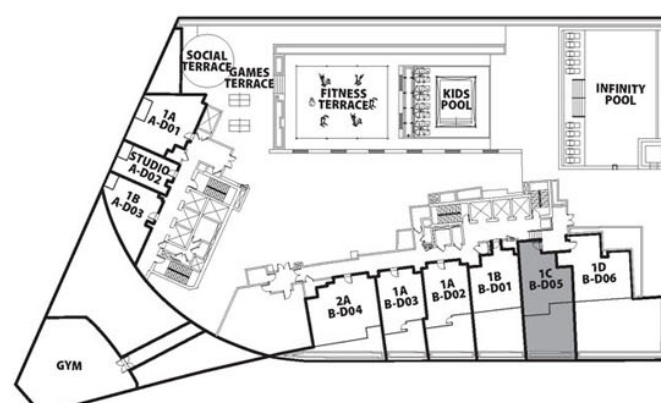
Tower B | Unit D05 | Deck Floor



**Burj**  
**/ Dubai Canal View**



|                   |                            |                                 |
|-------------------|----------------------------|---------------------------------|
| Apartment Area    | 52.28 m <sup>2</sup>       | 562.74 ft <sup>2</sup>          |
| Balcony Area      | 43.22 m <sup>2</sup>       | 465.21 ft <sup>2</sup>          |
| <b>Total Area</b> | <b>95.50 m<sup>2</sup></b> | <b>1,027.953 ft<sup>2</sup></b> |



Drawings are provided by our consultants. All dimensions, features and amenities are approximate at time of printing. Actual size may vary from stated area. Drawings not to scale E & OE. The developer reserves the right to make revisions to the floor plans and any features, materials and dimensions mentioned without further notice.

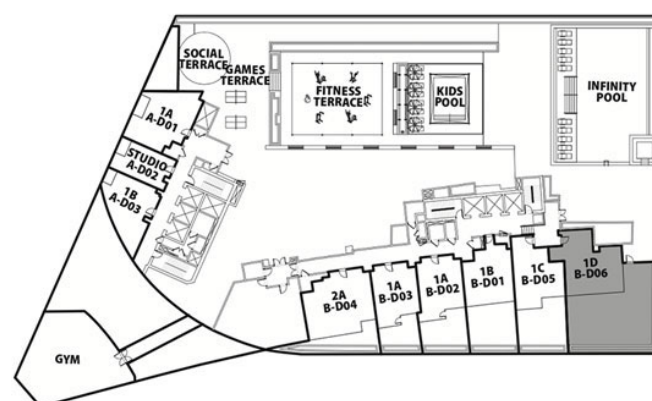
# 1 Bedroom - 1D

## 1 BEDROOM

Tower B | Unit D06 | Deck Floor



|                   |                             |                                |
|-------------------|-----------------------------|--------------------------------|
| Apartment Area    | 62.75 m <sup>2</sup>        | 675.00 ft <sup>2</sup>         |
| Balcony Area      | 120.93 m <sup>2</sup>       | 1,302.00 ft <sup>2</sup>       |
| <b>Total Area</b> | <b>183.68 m<sup>2</sup></b> | <b>1,977.00 ft<sup>2</sup></b> |

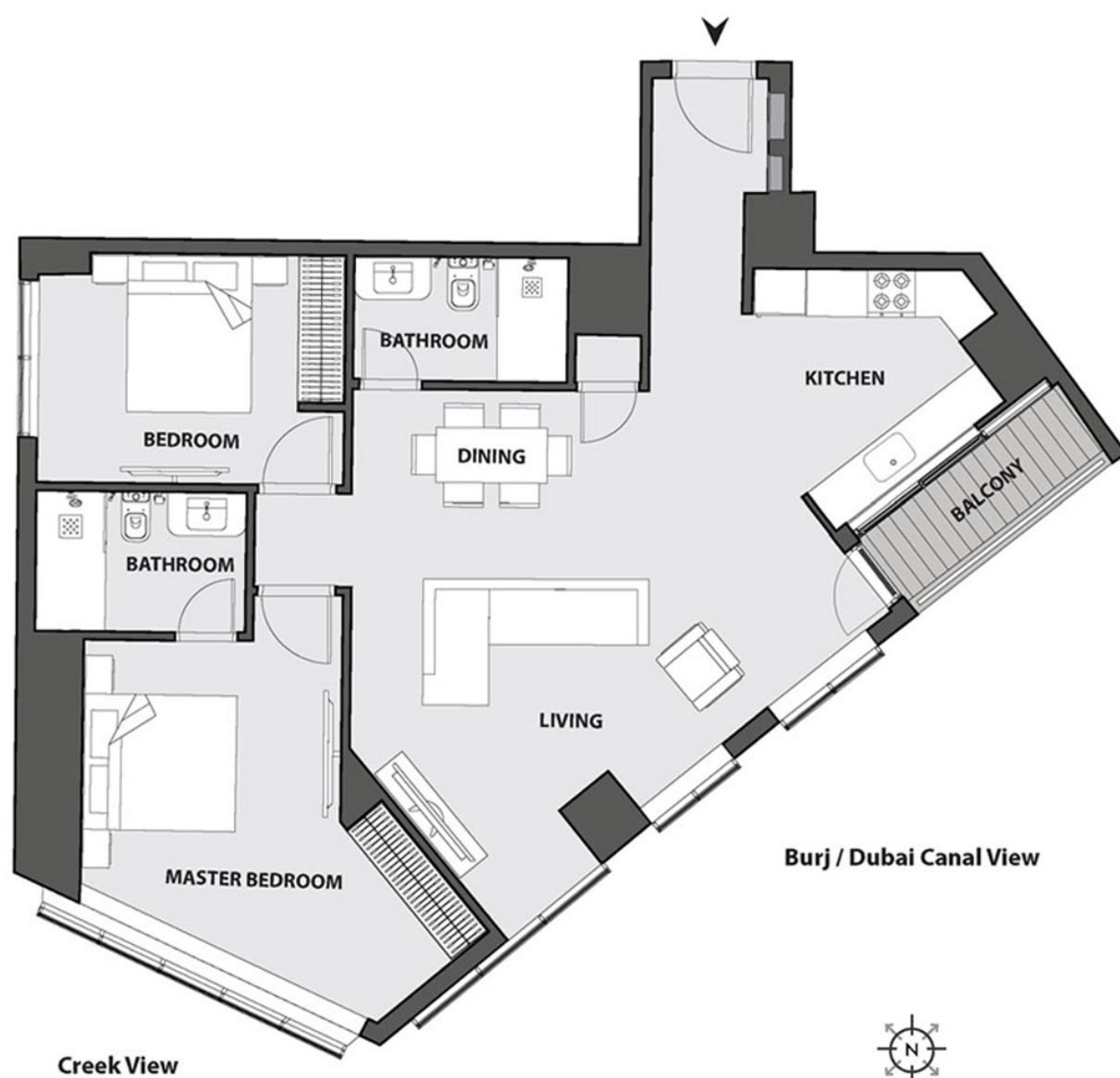


Drawings are provided by our consultants. All dimensions, features and amenities are approximate at time of printing. Actual size may vary from stated area. Drawings not to scale E & OE. The developer reserves the right to make revisions to the floor plans and any features, materials and dimensions mentioned without further notice.

## 2 Bedroom - 2A

### 2 BEDROOM

Tower A | Type 2A | Unit No.10 | 1<sup>st</sup>-4<sup>th</sup> Floor



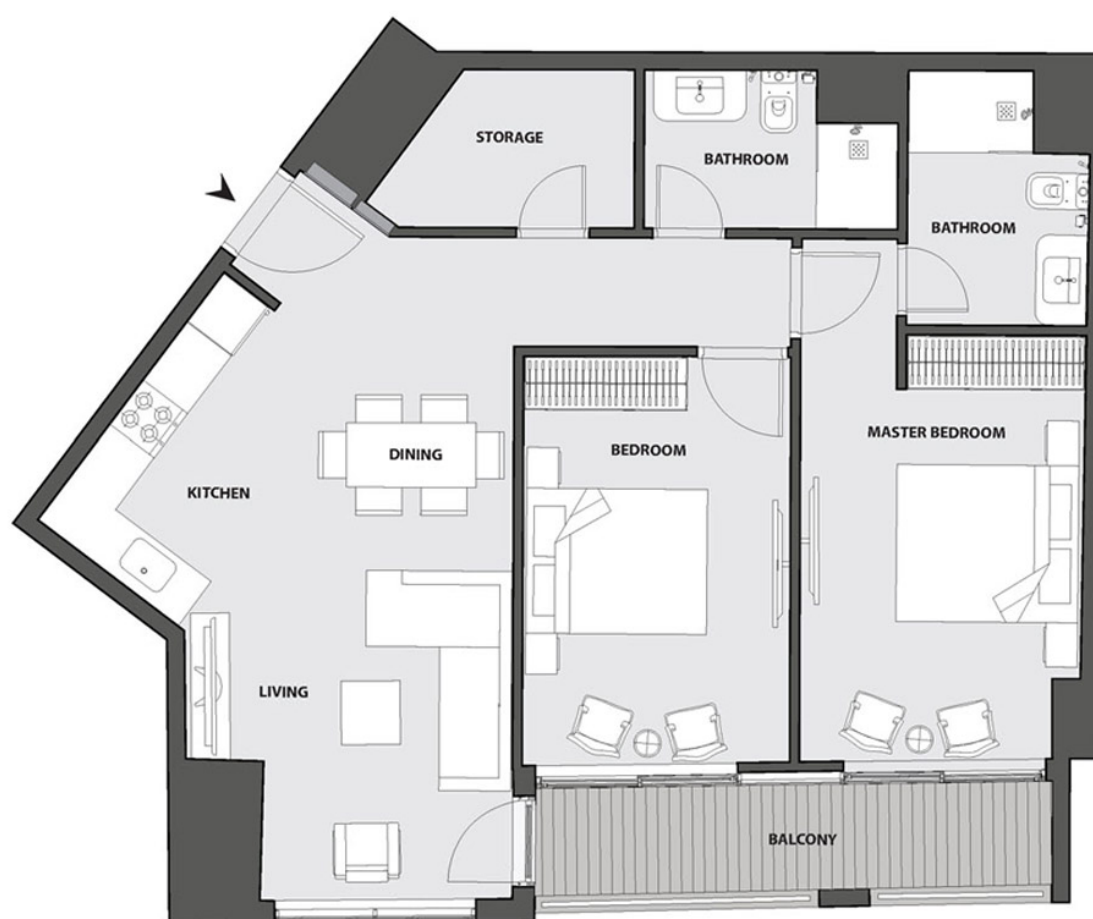
|                   |                             |                                |
|-------------------|-----------------------------|--------------------------------|
| Apartment Area    | 98.04 m <sup>2</sup>        | 1,055.29 ft <sup>2</sup>       |
| Balcony Area      | 4.68 m <sup>2</sup>         | 50.37 ft <sup>2</sup>          |
| <b>Total Area</b> | <b>102.72 m<sup>2</sup></b> | <b>1,105.66 ft<sup>2</sup></b> |

Drawings are provided by our consultants. All dimensions, features and amenities are approximate at time of printing. Actual size may vary from stated area. Drawings not to scale E & OE. The developer reserves the right to make revisions to the floor plans and any features, materials and dimensions mentioned without further notice.

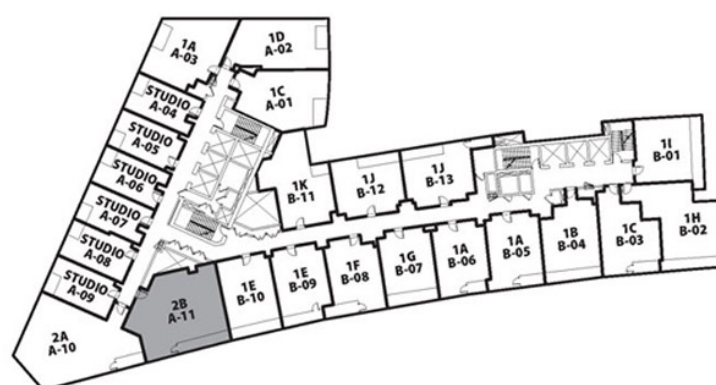
## 2 Bedroom - 2B

### 2 BEDROOM

Tower A | Type 2B | Unit No. 11 | 1<sup>st</sup>-8<sup>th</sup> Floor



Burj / Dubai Canal View

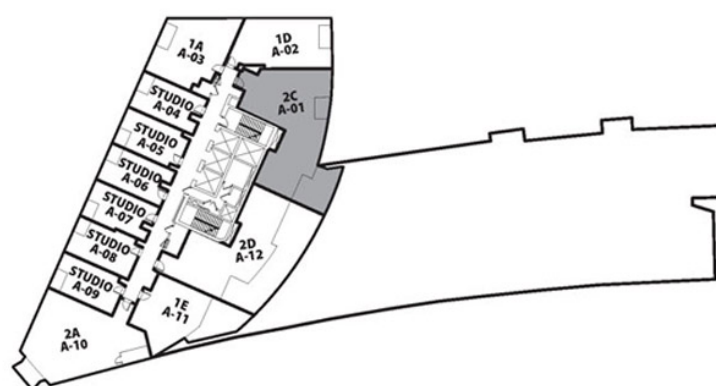




## 2 Bedroom - 2C

### 2 BEDROOM

Tower A | Type 2C | Unit No. 01 | 9<sup>th</sup> Floor



|                   |                             |                                |
|-------------------|-----------------------------|--------------------------------|
| Apartment Area    | 105.42 m <sup>2</sup>       | 1,134.73 ft <sup>2</sup>       |
| Balcony Area      | 23.20 m <sup>2</sup>        | 249.72 ft <sup>2</sup>         |
| <b>Total Area</b> | <b>128.62 m<sup>2</sup></b> | <b>1,384.45 ft<sup>2</sup></b> |

Drawings are provided by our consultants. All dimensions, features and amenities are approximate at time of printing. Actual size may vary from stated area. Drawings not to scale E & OE. The developer reserves the right to make revisions to the floor plans and any features, materials and dimensions mentioned without further notice.



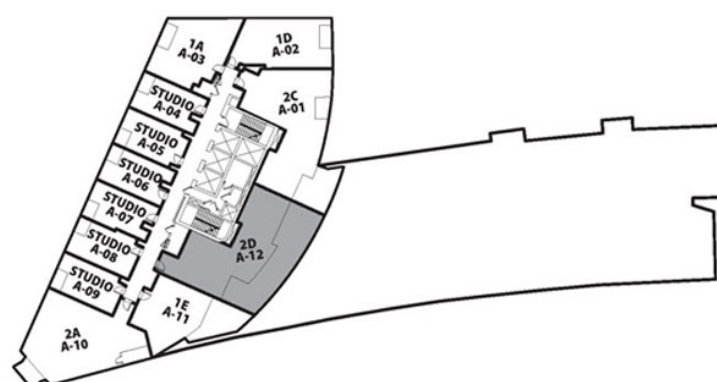
## 2 Bedroom - 2D

### 2 BEDROOM

Tower A | Type 2D | Unit No. 12 | 9<sup>th</sup> Floor



Dubai Canal View



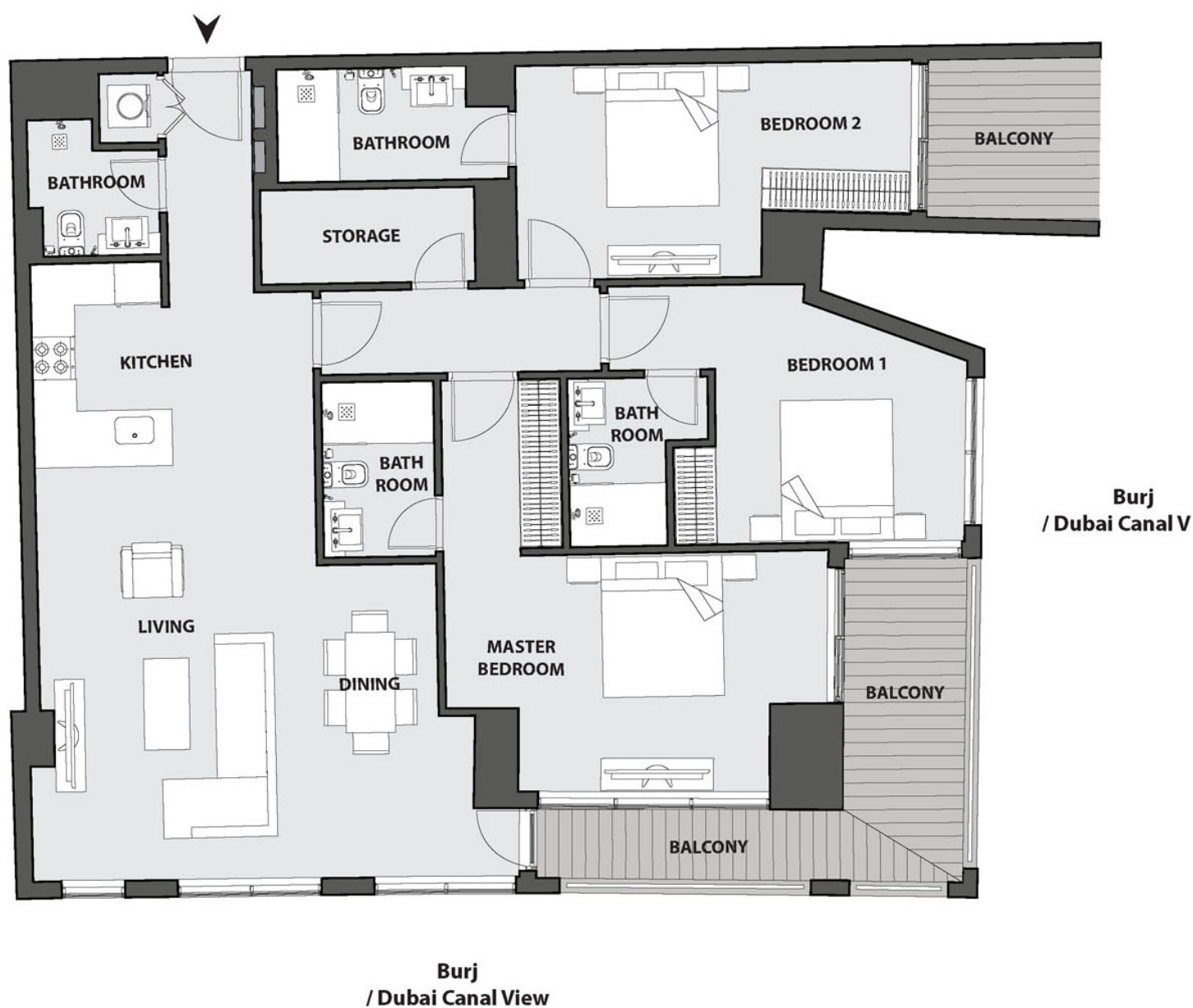
|                   |                             |                                |
|-------------------|-----------------------------|--------------------------------|
| Apartment Area    | 93.28 m <sup>2</sup>        | 1,004.06 ft <sup>2</sup>       |
| Balcony Area      | 52.49 m <sup>2</sup>        | 564.99 ft <sup>2</sup>         |
| <b>Total Area</b> | <b>145.77 m<sup>2</sup></b> | <b>1,569.05 ft<sup>2</sup></b> |

Drawings are provided by our consultants. All dimensions, features and amenities are approximate at time of printing. Actual size may vary from stated area. Drawings not to scale E & OE. The developer reserves the right to make revisions to the floor plans and any features, materials and dimensions mentioned without further notice.

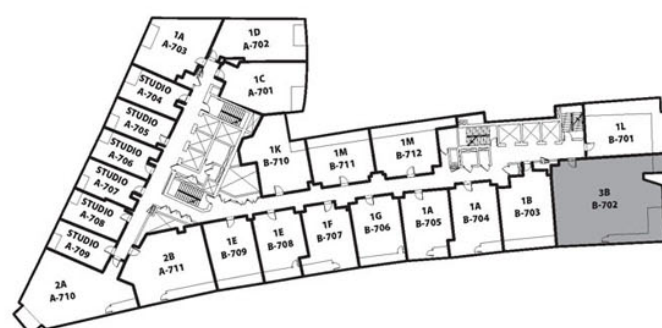
# 3 Bedroom - 3B

## 3 BEDROOM

Tower B | Unit 702 | Seventh Floor



|                   |                             |                                |
|-------------------|-----------------------------|--------------------------------|
| Apartment Area    | 136.24 m <sup>2</sup>       | 1,466.47 ft <sup>2</sup>       |
| Balcony Area      | 21.75 m <sup>2</sup>        | 234.12 ft <sup>2</sup>         |
| <b>Total Area</b> | <b>157.99 m<sup>2</sup></b> | <b>1,700.59 ft<sup>2</sup></b> |



Drawings are provided by our consultants. All dimensions, features and amenities are approximate at time of printing. Actual size may vary from stated area. Drawings not to scale E & OE. The developer reserves the right to make revisions to the floor plans and any features, materials and dimensions mentioned without further notice.

# Studio - SA

## STUDIO APARTMENT

Tower A | Studio A | Unit Nos. 04, 06, 08 | 1<sup>st</sup> - 21<sup>st</sup> Floor

Creek View

Meydan View



|                   |                            |                              |
|-------------------|----------------------------|------------------------------|
| Apartment Area    | 32.90 m <sup>2</sup>       | 354.13 ft <sup>2</sup>       |
| Balcony Area      | 2.34 m <sup>2</sup>        | 25.19 ft <sup>2</sup>        |
| <b>Total Area</b> | <b>35.24 m<sup>2</sup></b> | <b>379.32 ft<sup>2</sup></b> |

Drawings are provided by our consultants. All dimensions, features and amenities are approximate at time of printing. Actual size may vary from stated area. Drawings not to scale E & OE. The developer reserves the right to make revisions to the floor plans and any features, materials and dimensions mentioned without further notice.