



FURNISHED BY



OFFICIAL PARTNER

Dubai's First Iconic Towers

with

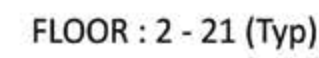
ASTON MARTIN Furnished Interiors



Exclusive Lifestyle

OFFICIAL PARTNER

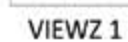
1) All information, materials, plans and amenities are approximate and provided for illustrative purposes only. The developer reserves the right to make revisions to the floor plans and any features, materials, dimensions, drawings, and amenities of the project without notice.
2) Units areas, actual dimensions, layout, location, specifications of balcony, door, wardrobe or other fixtures may vary floor to floor and between units and are subject to revision by the developer.
3) Furniture and electric devices will not be provided by the developer, unless specified otherwise in the Unit Sale Purchase Agreement.



FLOOR : 23



FLOOR : 24 - 35 (Typ)

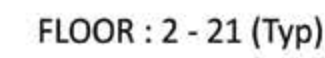


AREA in Sq.Ft :

UNITS in VIEWZ 1:

UNITS in VIEWZ 2:

FEATURES : ☒ Office



AREA in Sq.Ft :

UNITS in VIEWZ 1:

UNITS in VIEWZ 2:

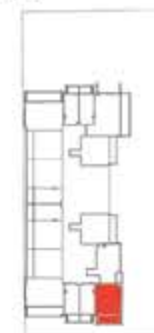
FEATURES : ☒ Multi Purpose Room



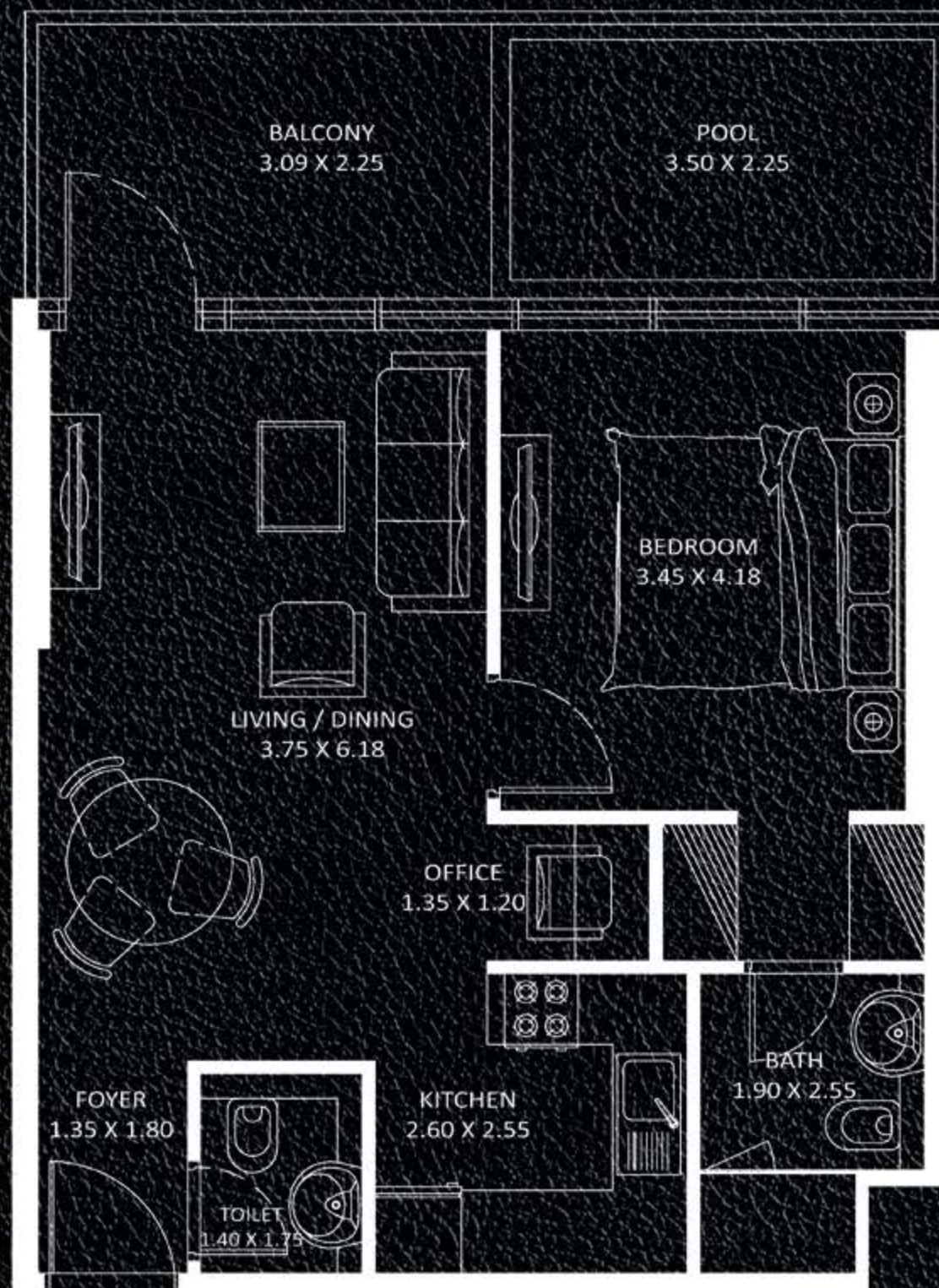
FLOOR : 2 - 21 (Typ)



VIEWZ 1



VIEWZ 2



**PRESIDENTIAL
SUITE
TYPE - D**

AREA in Sq.Ft :

Apartment	616
Balcony	147
Total	763

UNITS in VIEWZ 1:

FLOOR :	UNIT Nos :
2 - 21 (Typ)	(203) to (2103)

UNITS in VIEWZ 2 :

FLOOR :	UNIT Nos :
2 - 21 (Typ)	(203) to (2103)

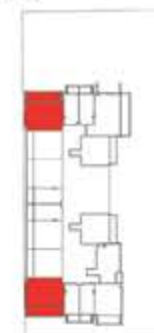
FEATURES : ☒ Pool ☒ Office



FLOOR : 2 - 21 (Typ)



VIEWZ 1

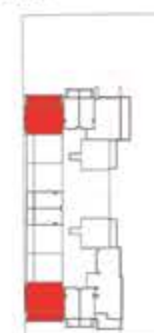


VIEWZ 2

FLOOR : 24 - 35 (Typ)



VIEWZ 1



VIEW7 2



2 BEDROOM TYPE - A

AREA in Sq.Ft :

Apartment	801
Balcony	250 to 260
Total	1,051 to 1,061

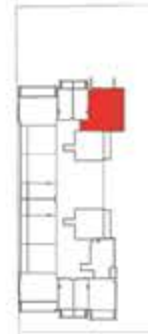
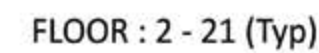
UNITS in VIEWZ 1:

FLOOR :	UNIT Nos :
2 - 21 (Typ)	(206) (213) to (2106) (2113)
24 - 35 (Typ)	(2405) (2412) to (3505) (3512)

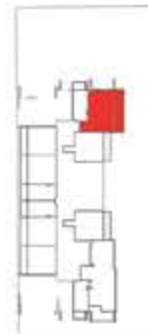
UNITS in VIEWZ 2 :

FLOOR :	UNIT Nos :
2 - 21 (Typ)	(206) (213) to (2106) (2113)
24 - 35 (Typ)	(2405) (2412) to (3505) (3512)

FEATURES: ☒ Pool



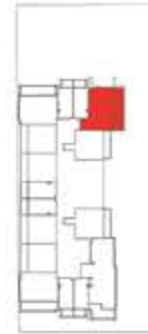
FLOOR : 23



VIEWZ 1

VIEWZ 2

FLOOR : 24 - 35 (Typ)



VIEWZ 1

VIEWZ 2



AREA in Sq.Ft :	
Apartment	874
Balcony	278
Total	1,152

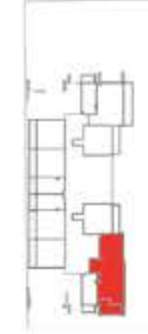
UNITS in VIEWZ 1 :

FLOOR :	UNIT Nos :
2 - 21 (Typ)	(216) to (2116)
23	2311
24 - 35 (Typ)	(2415) to (3515)

UNITS in VIEWZ 2 :

FLOOR :	UNIT Nos :
2 - 21 (Typ)	(216) to (2116)
23	2311
24 - 35 (Typ)	(2415) to (3515)

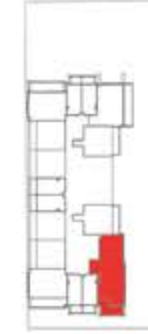
FEATURES: ☒ Pool ☒ Study



VIEWZ :

VIEWZ 2

FLOOR : 24 - 35 (Typ)



VIEWZ :

VIEWZ 2



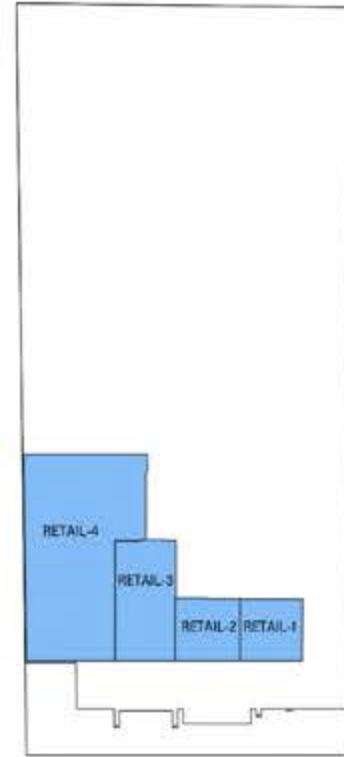
AREA in Sq.Ft :	
Apartment	1,342
Balcony	210
Total	1,552

UNITS in VIEWZ 1 :	
FLOOR :	UNIT Nos :
23	(2302)
24 - 35 (Typ)	(2402) to (3502)

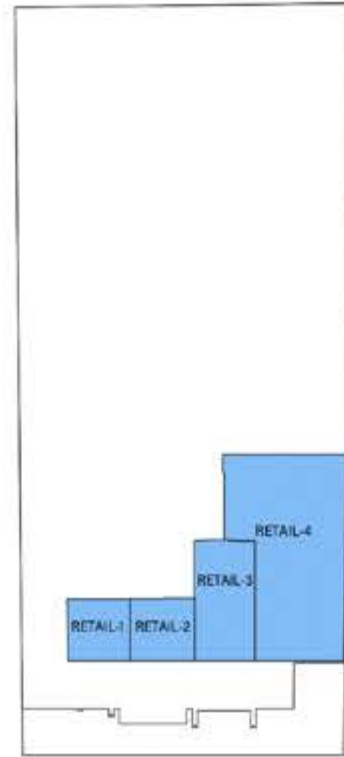
UNITS in VIEWZ 1:	
FLOOR :	UNIT Nos :
23	(2302)
24 - 35 (Typ)	(2402) to (3502)

FEATURES: ☒ Pool ☒ Maid Room

Ground Floor

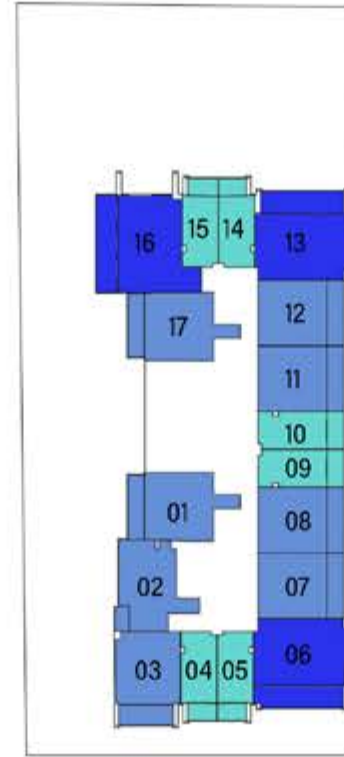


VIEWZ 1

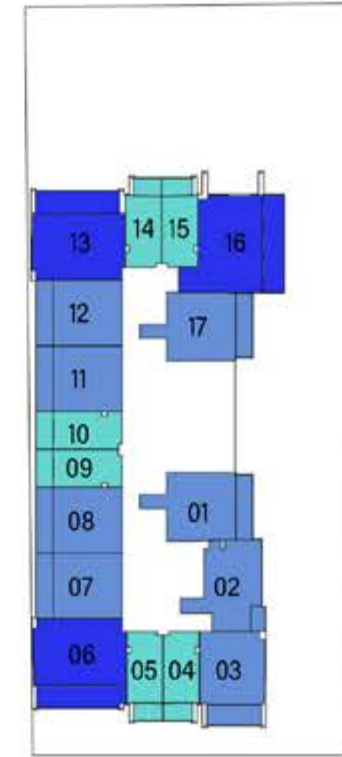


VIEWZ 2

Floor 2 to 21 (Typ)



VIEWZ 1

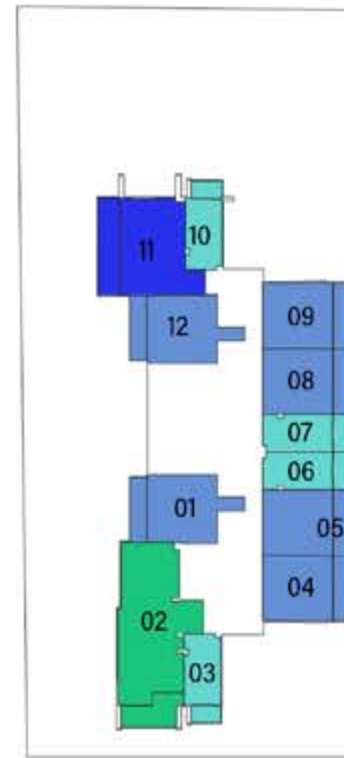


VIEWZ 2

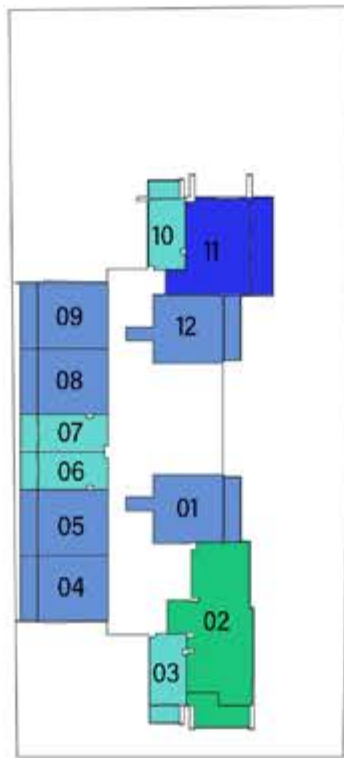


- RETAIL
- STUDIO
- 1 BEDROOM
- 2 BEDROOM
- 3 BEDROOM

Floor 23

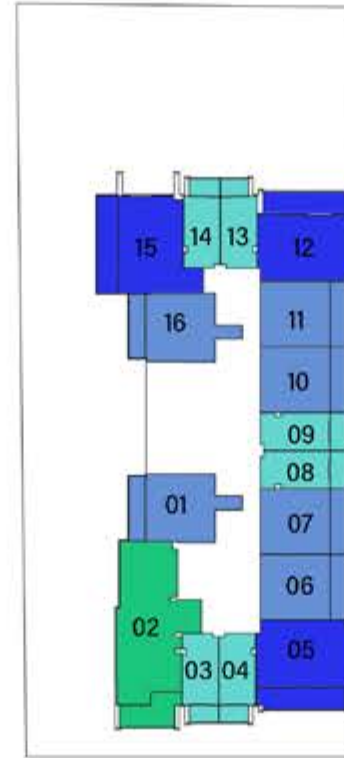


VIEWZ 1

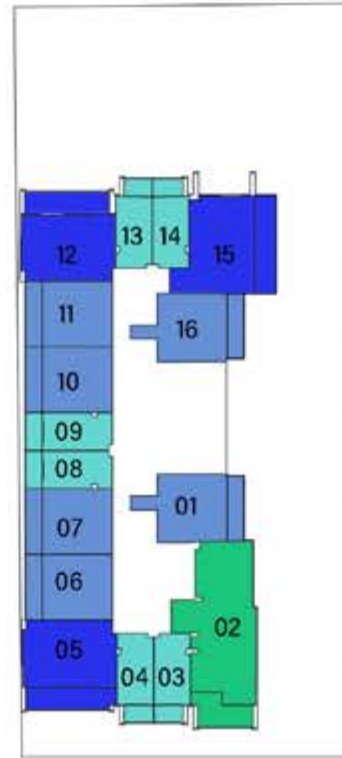


VIEWZ 2

Floor 24 to 35 (Typ)



VIEWZ 1



VIEWZ 2

CITY VIEW

LAKE VIEW



ISLAND VIEW

TOWN VIEW



LEGEND

1. Swimming Pool
2. Kids Pool
3. Aquatic GYM
4. Kids Play Area
5. Mini Golf
6. Cycling Track
7. Open Air Yoga
8. Outdoor GYM
9. Indoor Gym
10. Chessboard
11. Open Jacuzzi
12. Library
13. Business Center
14. Doctor On Call
15. Snooker Table
16. Table Tennis Zone



LEGEND

1. Swimming Pool
2. Kids Pool
3. Open Air Floating Cinema
4. BBQ Area
5. Multi Purpose Hall
6. Jogging Track
7. Half Basketball Court
8. Tennis Court
9. Kids Play Area
10. Kids Day Care
11. Beauty Parlour
12. SPA Center
13. Indoor Gym
14. Japanese Garden
15. Kids Splash Pad
16. Rain Shower Area
17. Cigar Lounge

AMENITIES - VIEWZ 1



Dubai's First Iconic Towers
with
ASTON MARTIN
Furnished Interiors
OFFICIAL PARTNER

AMENITIES - VIEWZ 2



Dubai's First Iconic Towers
with
ASTON MARTIN
Furnished Interiors
OFFICIAL PARTNER




CONTACT US

Email:

info@bestluxury.properties

Office Number:

 +971 4 272 1516