

DUBAI HILLS

ESTATE

MAPLE III

FLOOR PLANS



EMAAR



MERAAS

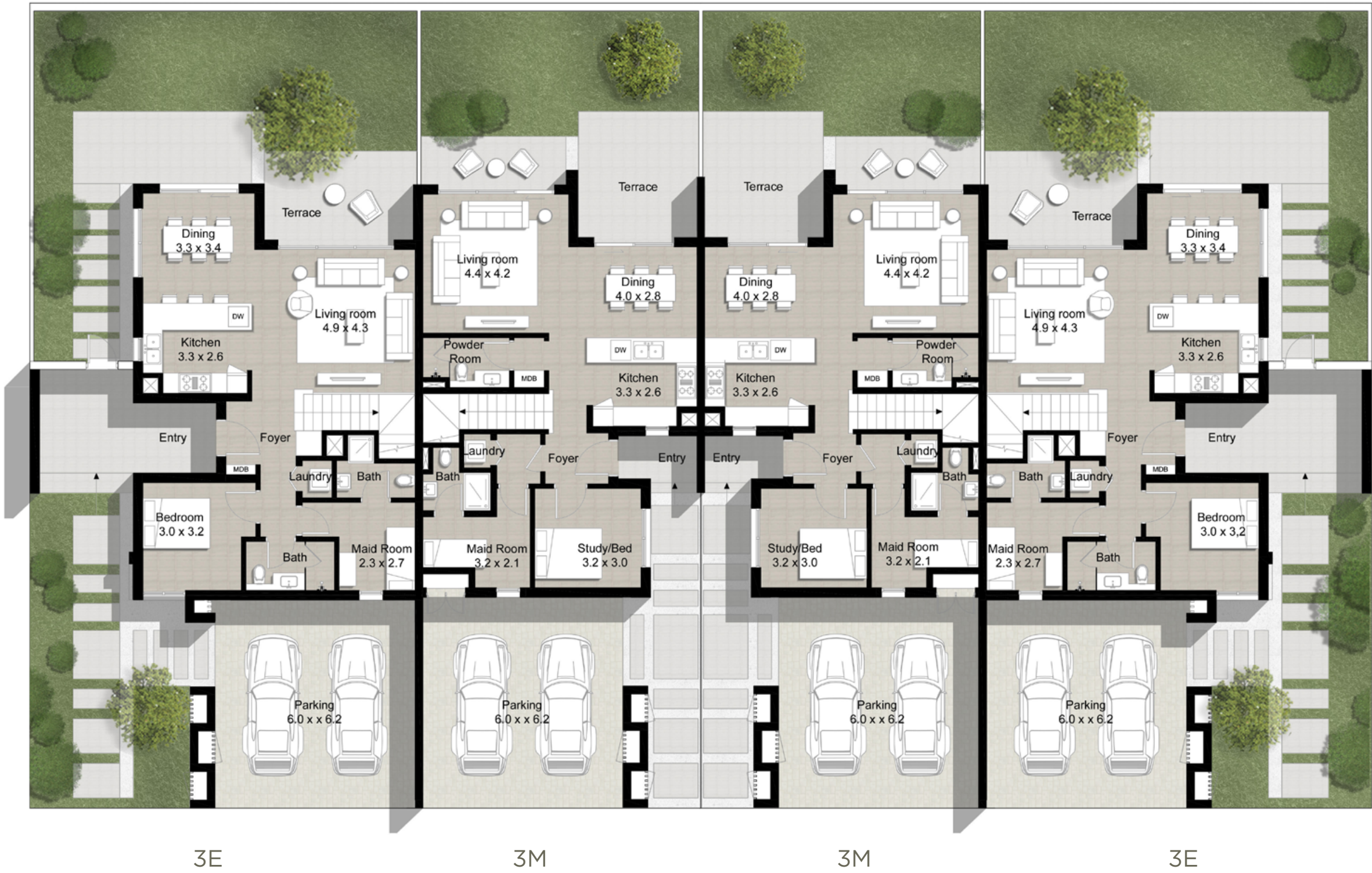
MAPLE III

DUBAI HILLS
ESTATE

TYPE 3
Cluster of 4 Units

Unit 3E
5 Bedroom
Total Area: 2,726 sq ft

Unit 3M
4 Bedroom
Total Area: 2,418 sq ft



Ground Level



Upper Level

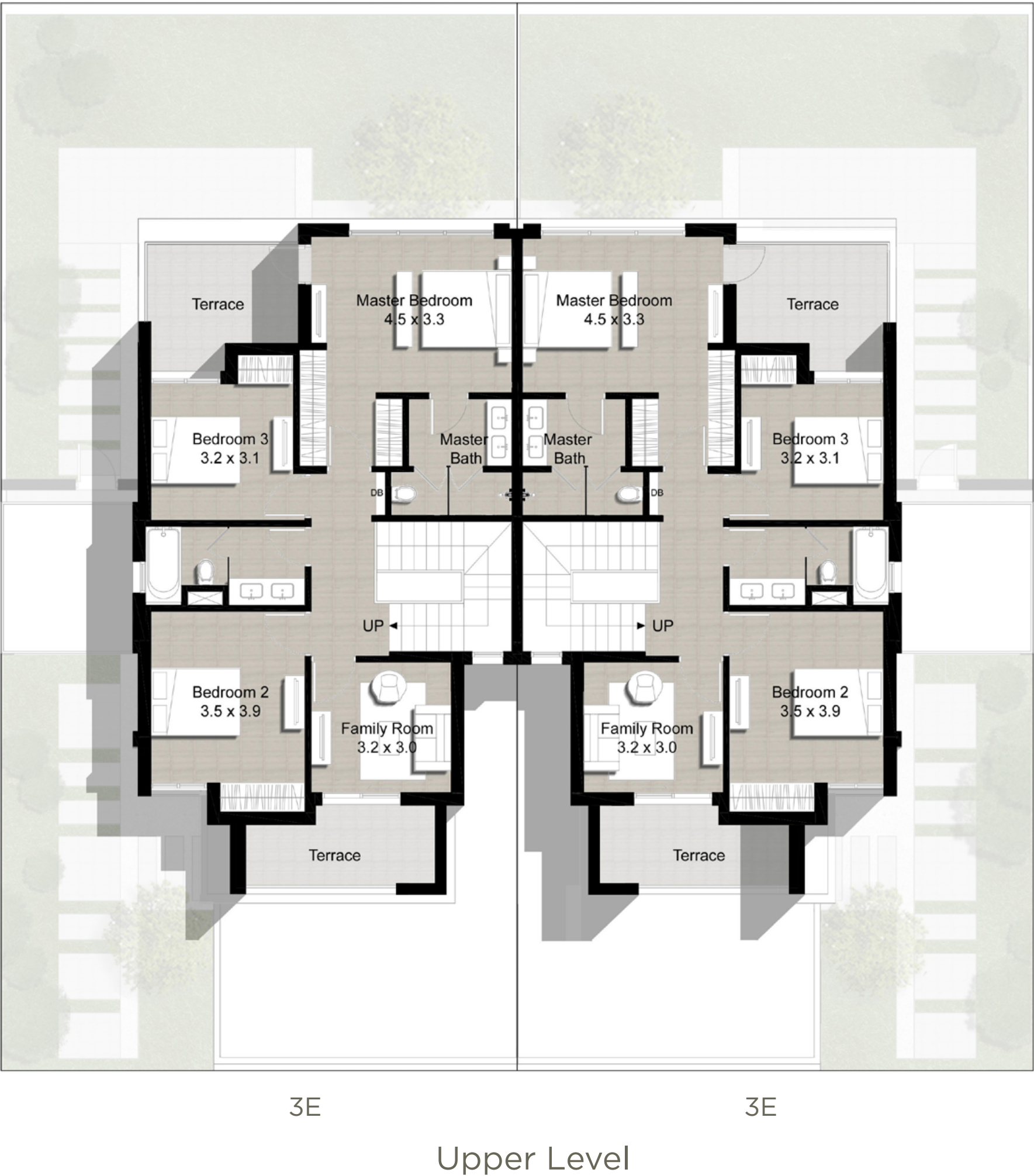
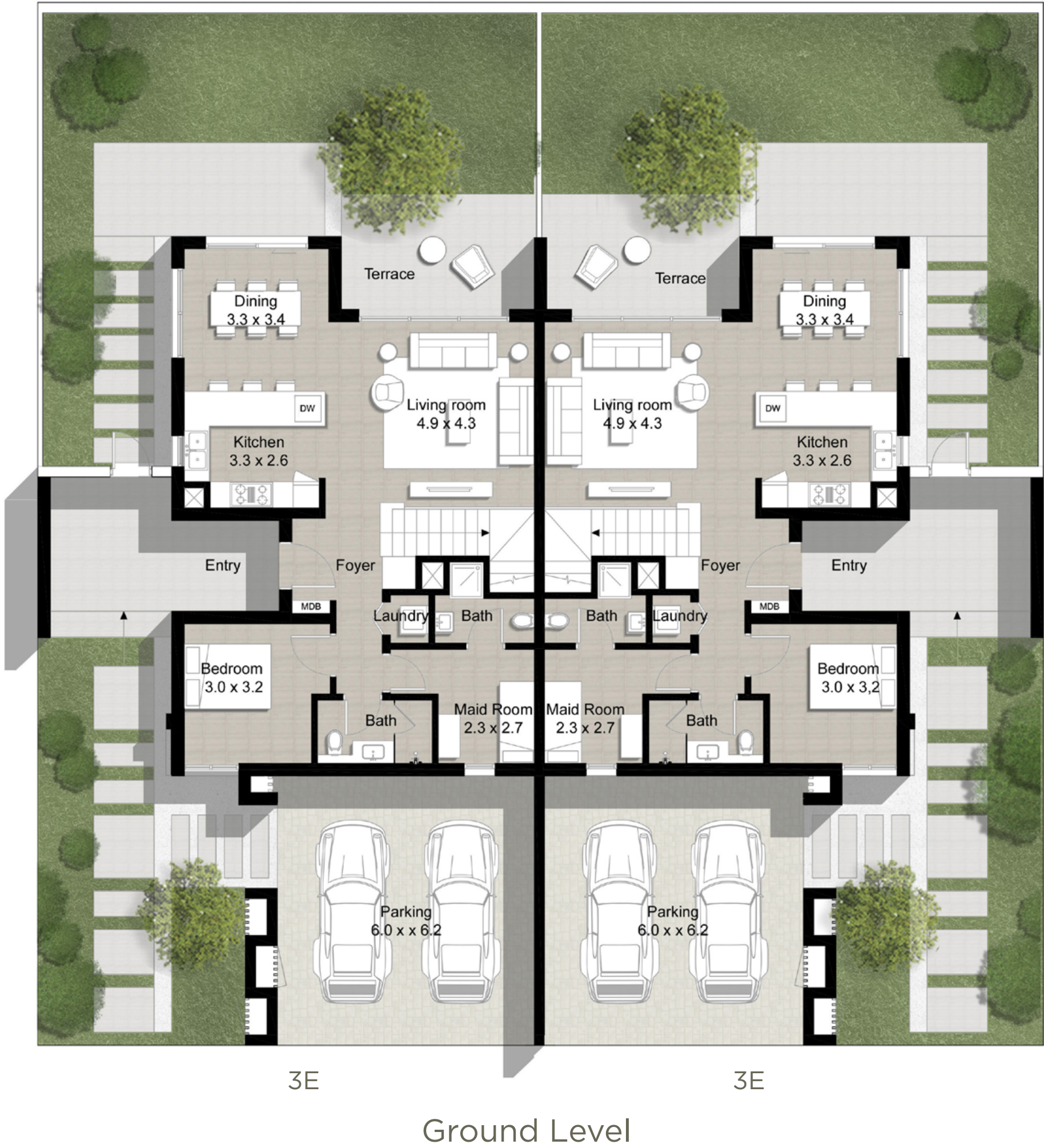
FLOOR PLAN 1. All dimensions are in imperial and metric, and measured from finish to finish excluding construction tolerances. 2. All materials, dimensions, and drawings are approximate only. 3. Information is subject to change without notice, at developer's absolute discretion. 4. Actual area may vary from the stated area. 5. Drawings not to scale. 6. All images used are for illustrative purposes only and do not represent the actual size, features, specifications, fittings, and furnishings. 7. The developer reserves the right to make revisions / alterations, at it's absolute discretion, without any liability whatsoever.

MAPLE III

TYPE 3

Cluster of 2 Units

Unit 3E
5 Bedroom
Total Area: 2,726 sq ft



FLOOR PLAN 1. All dimensions are in imperial and metric, and measured from finish to finish excluding construction tolerances. 2. All materials, dimensions, and drawings are approximate only. 3. Information is subject to change without notice, at developer's absolute discretion. 4. Actual area may vary from the stated area. 5. Drawings not to scale. 6. All images used are for illustrative purposes only and do not represent the actual size, features, specifications, fittings, and furnishings. 7. The developer reserves the right to make revisions / alterations, at it's absolute discretion, without any liability whatsoever.

MAPLE III

DUBAI HILLS ESTATE

TYPE 2

Cluster of 4 Units

Unit 2E
4 Bedroom
Total Area: 2,471 sq ft

Unit 2M
3 Bedroom
Total Area: 2,266 sq ft



Ground Level



Upper Level

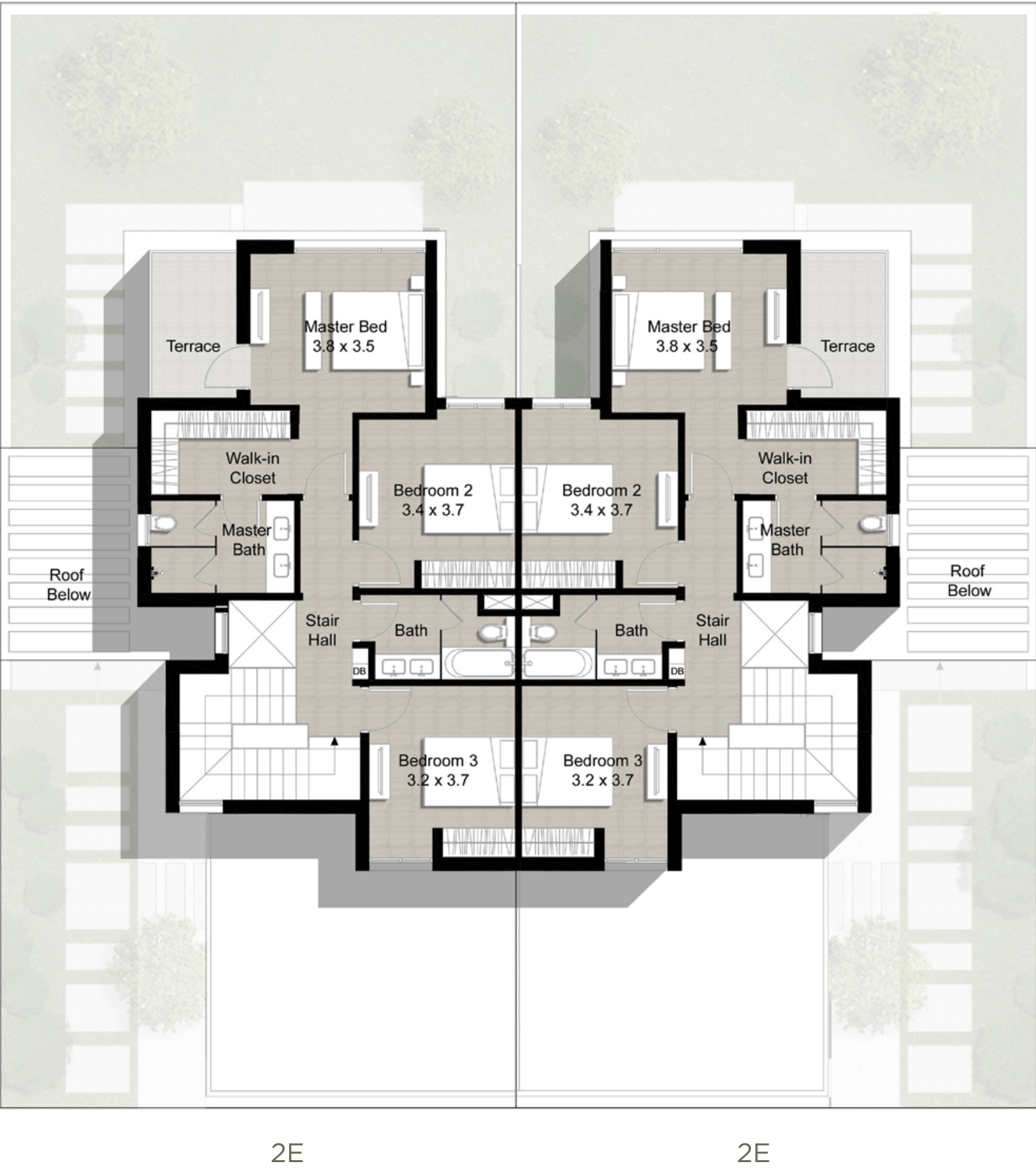
FLOOR PLAN 1. All dimensions are in imperial and metric, and measured from finish to finish excluding construction tolerances. 2. All materials, dimensions, and drawings are approximate only. 3. Information is subject to change without notice, at developer's absolute discretion. 4. Actual area may vary from the stated area. 5. Drawings not to scale. 6. All images used are for illustrative purposes only and do not represent the actual size, features, specifications, fittings, and furnishings. 7. The developer reserves the right to make revisions / alterations, at it's absolute discretion, without any liability whatsoever.

MAPLE III

TYPE 2

Cluster of 2 Units

Unit 2E
4 Bedroom
Total Area: 2,471 sq ft



FLOOR PLAN 1. All dimensions are in imperial and metric, and measured from finish to finish excluding construction tolerances. 2. All materials, dimensions, and drawings are approximate only. 3. Information is subject to change without notice, at developer's absolute discretion. 4. Actual area may vary from the stated area. 5. Drawings not to scale. 6. All images used are for illustrative purposes only and do not represent the actual size, features, specifications, fittings, and furnishings. 7. The developer reserves the right to make revisions / alterations, at it's absolute discretion, without any liability whatsoever.




CONTACT US

Email:

info@bestluxury.properties

Office Number:

 +971 4 272 1516